



Presence Observation

Reed canarygrass

Phalaris arundinacea



Record ID: 515700

Observer: Ryan Wheeler

Source: MI DNR Forest Resource and Wildlife Divisions

Latitude: 45.854707

Longitude: -86.732212

Area: Not Reported

Density: Not Reported

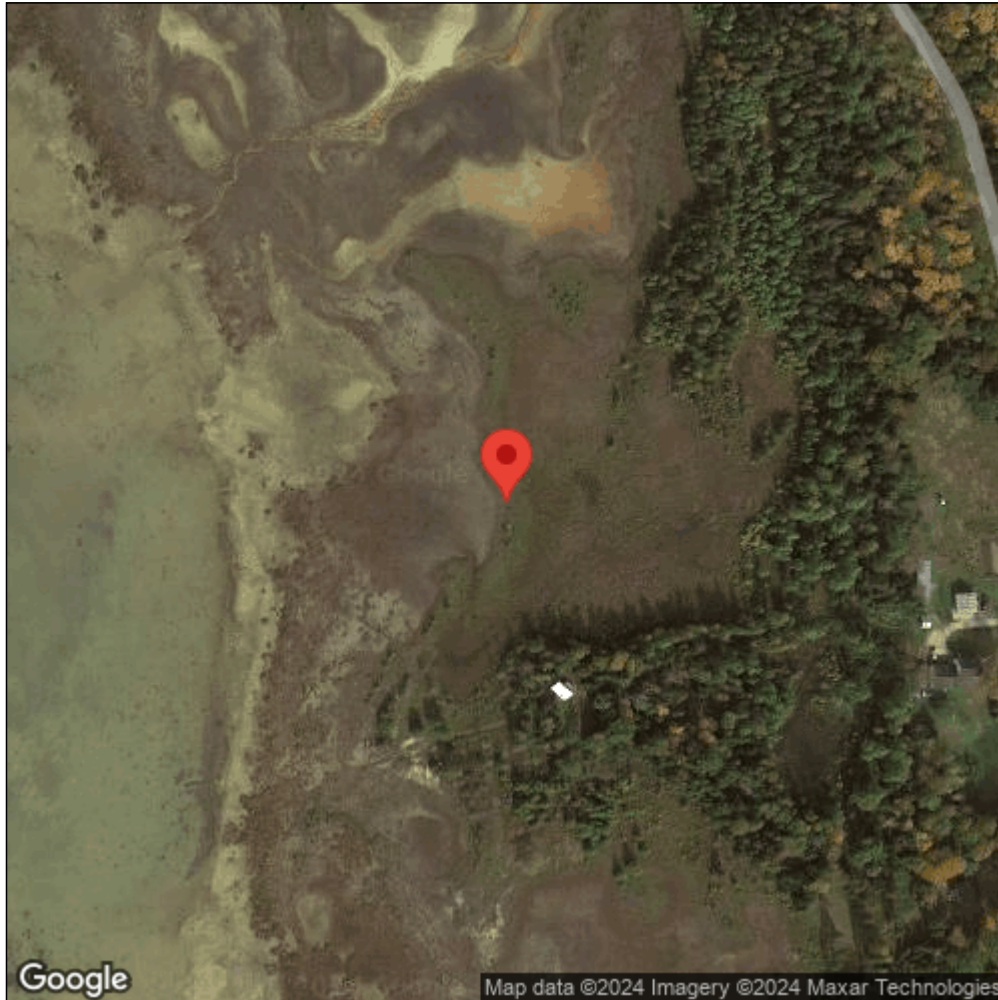
Observation Date: August 2, 2012

Date Entered: August 14, 2015

Comments: Great Lakes Coastal Wetland Mon Prj- Site: 1747 - Transect: 2 - Point Number: 5 - Percent Cover (Area: 1 m. sq.): 1% - Team Name: N. Danz - Collector Name: T Much



Midwest Invasive Species
Information Network



Source: MISIN. 2024. Midwest Invasive Species Information Network. Michigan State University - Applied Spatial Ecology and Technical Services Laboratory. This record is available online at <https://www.misin.msu.edu/report/misin/submit/summary/printRecord.php?obs=reprint&id=515700>