



Presence Observation

Purple loosestrife

Lythrum salicaria



Record ID: 522273

Observer: Melanie Manion

Source: Ottawa County Parks

Latitude: 42.8110544

Longitude: -85.97665911

Area: Not Reported

Density: Not Reported

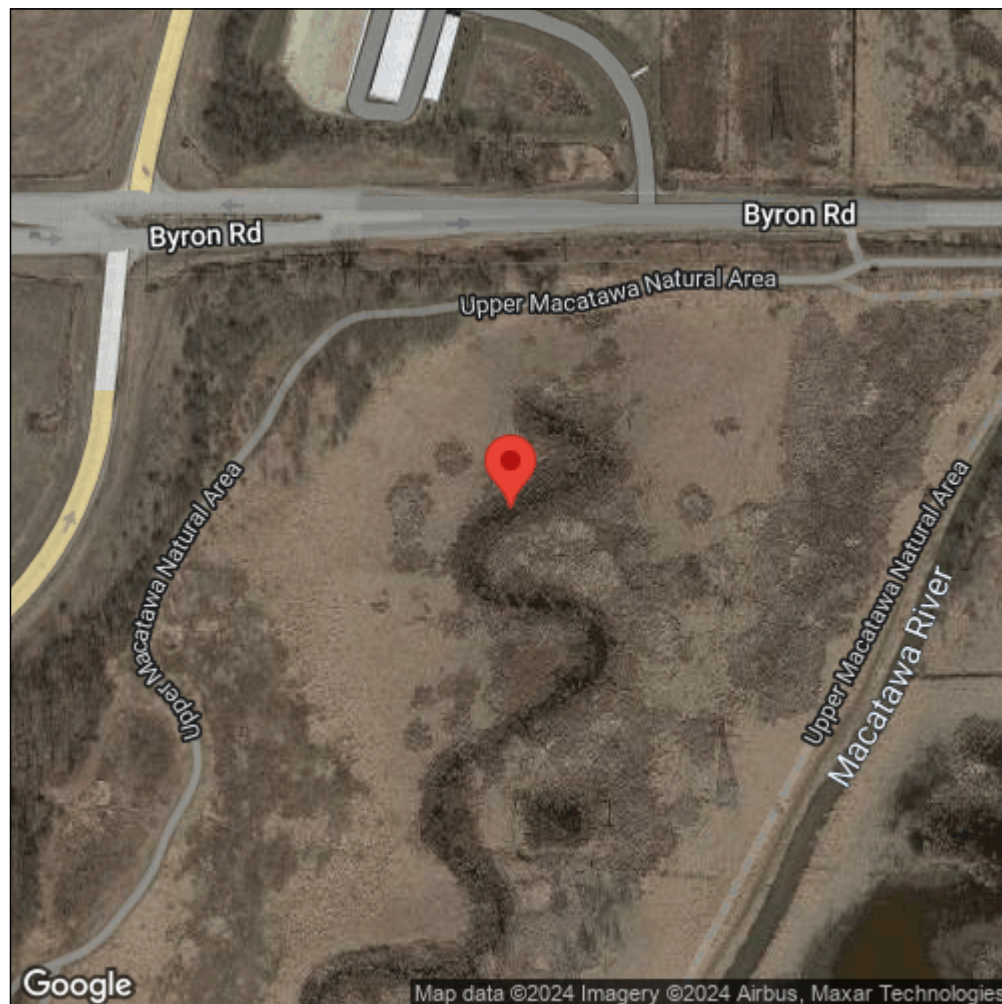
Observation Date: July 22, 2015

Date Entered: September 1, 2015

Comments: UMPL - INVASIVES\PURPLE LOOSESTRIFE\PuLo11UMNA.shp - 3 -
Location ID: 369_area - Upper Macatawa Natural Area



Midwest Invasive Species
Information Network



Source: MISIN. 2024. Midwest Invasive Species Information Network. Michigan State University - Applied Spatial Ecology and Technical Services Laboratory. This record is available online at <https://www.misin.msu.edu/report/misin/submit/summary/printRecord.php?obs=reprint&id=522273>