



## Presence Observation

### Purple loosestrife

*Lythrum salicaria*



**Record ID:** 522275

**Observer:** Melanie Manion

**Source:** Ottawa County Parks

**Latitude:** 42.81054717

**Longitude:** -85.97621165

**Area:** Not Reported

**Density:** Not Reported

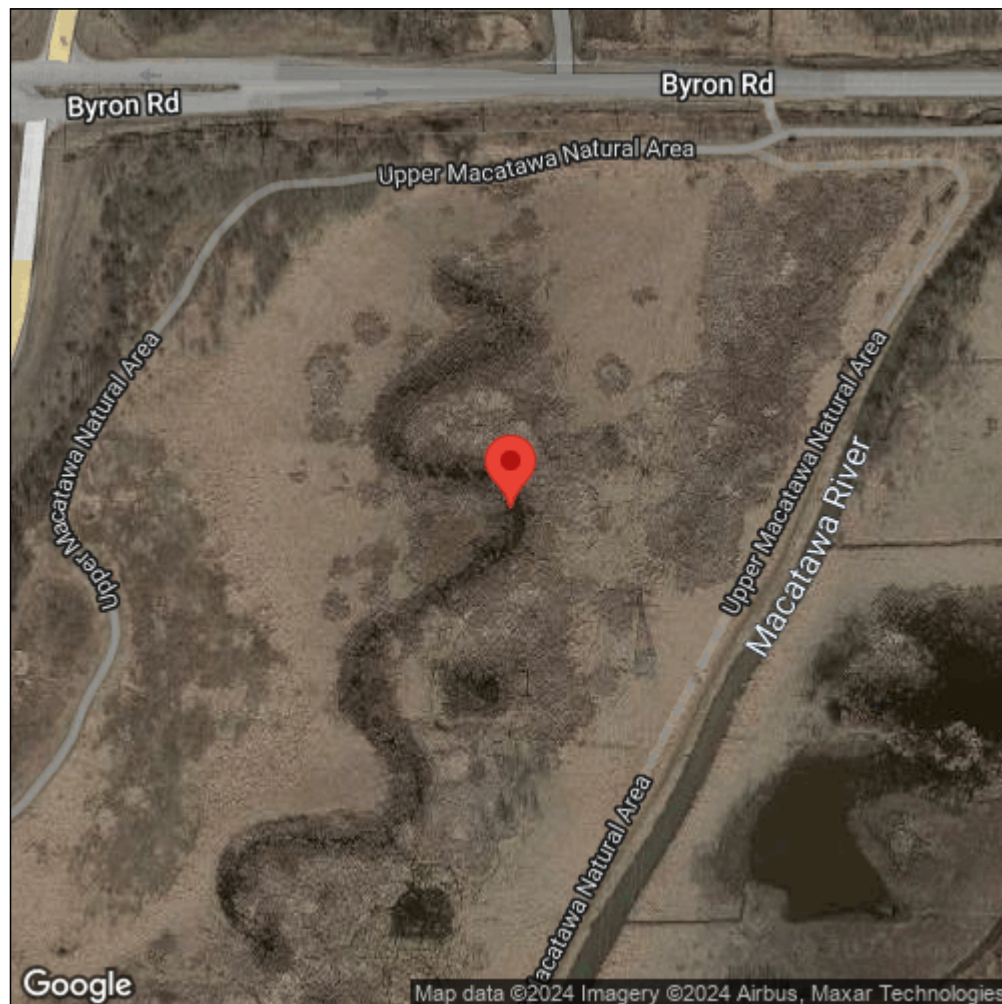
**Observation Date:** July 22, 2015

**Date Entered:** September 1, 2015

**Comments:** UMPL - INVASIVES\PURPLE LOOSESTRIFE\PuLo11UMNA.shp - 5 -  
Location ID: 371\_area - Upper Macatawa Natural Area



Midwest Invasive Species  
Information Network



Source: MISIN. 2024. Midwest Invasive Species Information Network. Michigan State University - Applied Spatial Ecology and Technical Services Laboratory. This record is available online at <https://www.misin.msu.edu/report/misin/submit/summary/printRecord.php?obs=reprint&id=522275>