



Midwest Invasive Species
Information Network

Presence Observation

Purple loosestrife

Lythrum salicaria



Record ID: 54697

Observer: Great Lakes Indian Fish and Wildlife Commission

Source: Great Lakes Indian Fish and Wildlife Commission

Latitude: 46.80221

Longitude: -90.83285

Area: Not Reported

Density: Not Reported

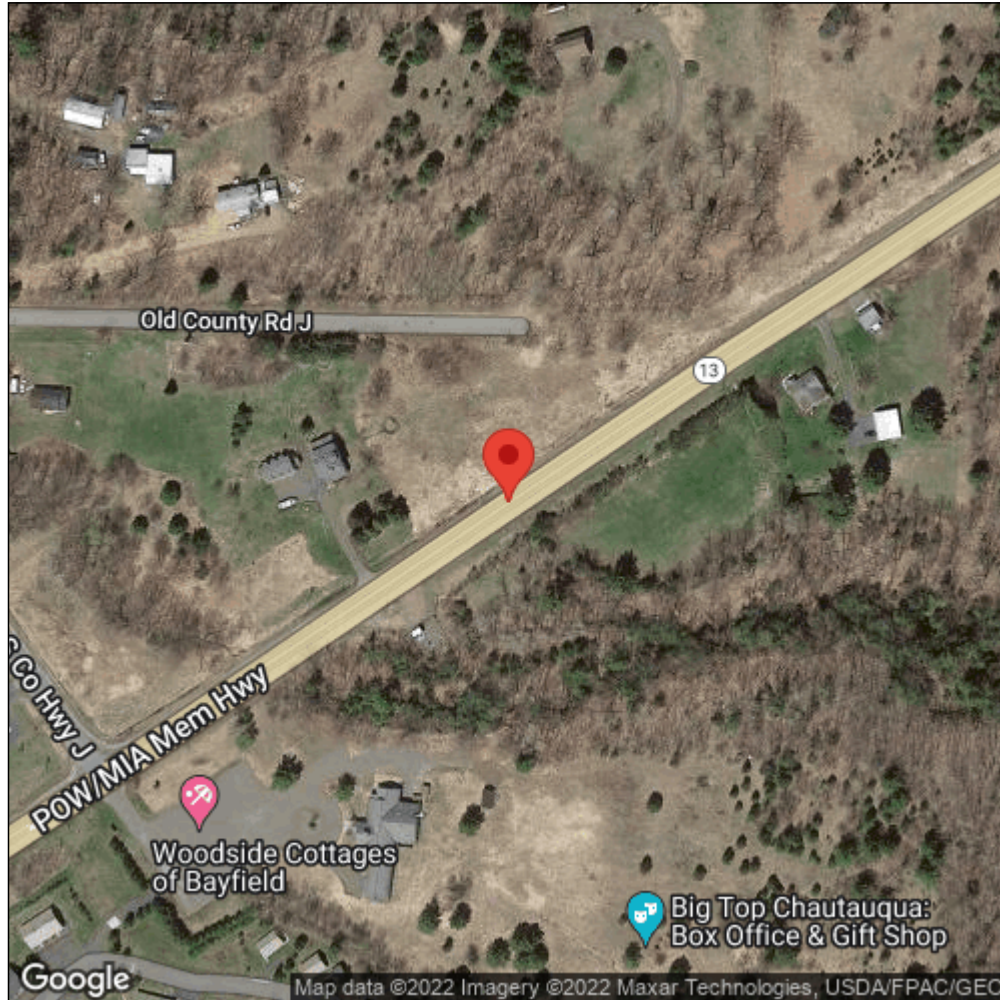
Observation Date: December 31, 2000

Date Entered: December 31, 2000

Comments: Great Lakes Indian Fish & Wildlife Commission - Hwy 13 North



Midwest Invasive Species
Information Network



Source: MISIN. 2022. Midwest Invasive Species Information Network. Michigan State University - Applied Spatial Ecology and Technical Services Laboratory. This record is available online at <https://www.misin.msu.edu/report/misin/submit/summary/printRecord.php?obs=reprint&id=54697>