



Presence Observation

Purple loosestrife

Lythrum salicaria



Record ID: 548489

Observer: Mindy Otto

Source: CUPCWMA/ACD/SWP

Latitude: 46.40947

Longitude: -86.63997

Area: Individual/Few/Several

Density: Sparse

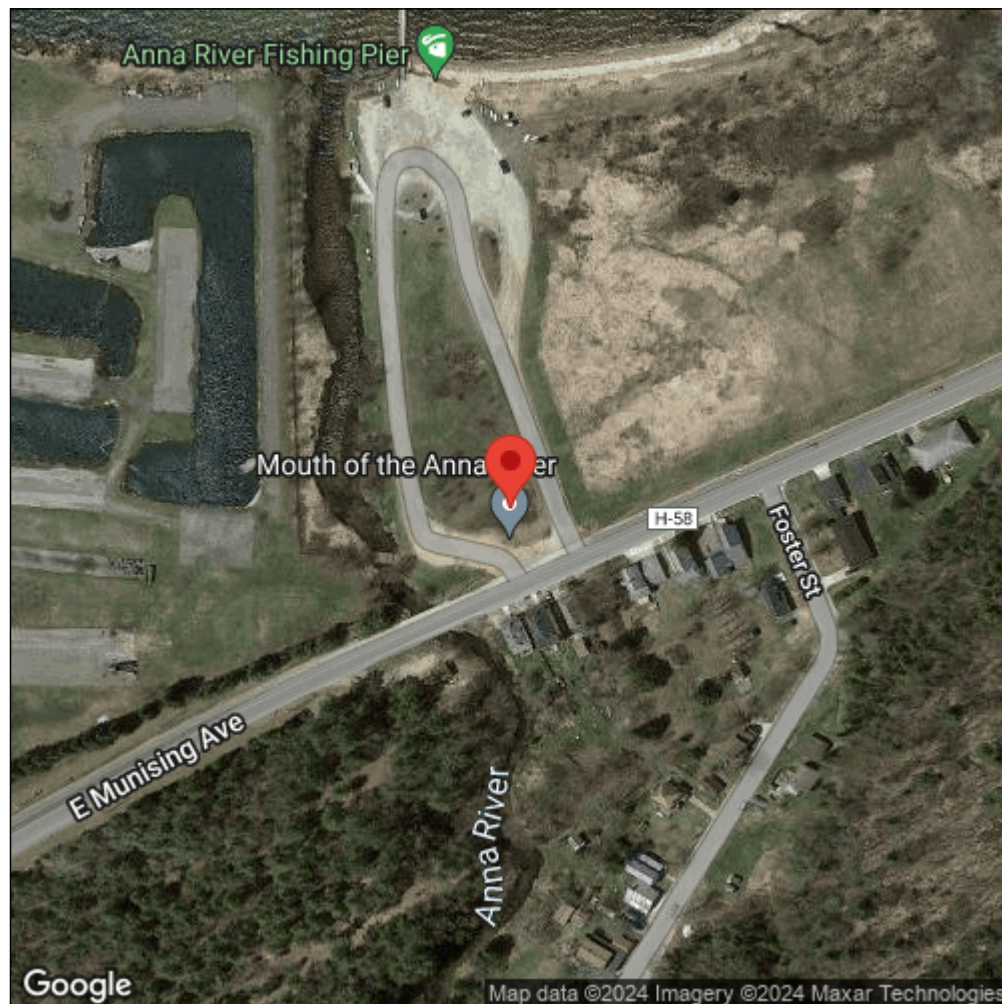
Observation Date: August 19, 2015

Date Entered: November 3, 2015

Comments: Original observer(s): TG - City Launch (Munising) - Working with Superior Watershed Partnership



Midwest Invasive Species
Information Network



Source: MISIN. 2024. Midwest Invasive Species Information Network. Michigan State University - Applied Spatial Ecology and Technical Services Laboratory. This record is available online at <https://www.misin.msu.edu/report/misin/submit/summary/printRecord.php?obs=reprint&id=548489>