



## Presence Observation

### Purple loosestrife

*Lythrum salicaria*



**Record ID:** 548566

**Observer:** Mindy Otto

**Source:** CUPCWMA/MCCD

**Latitude:** 46.509868

**Longitude:** -87.829627

**Area:** greater than 1 acre

**Density:** Not Reported

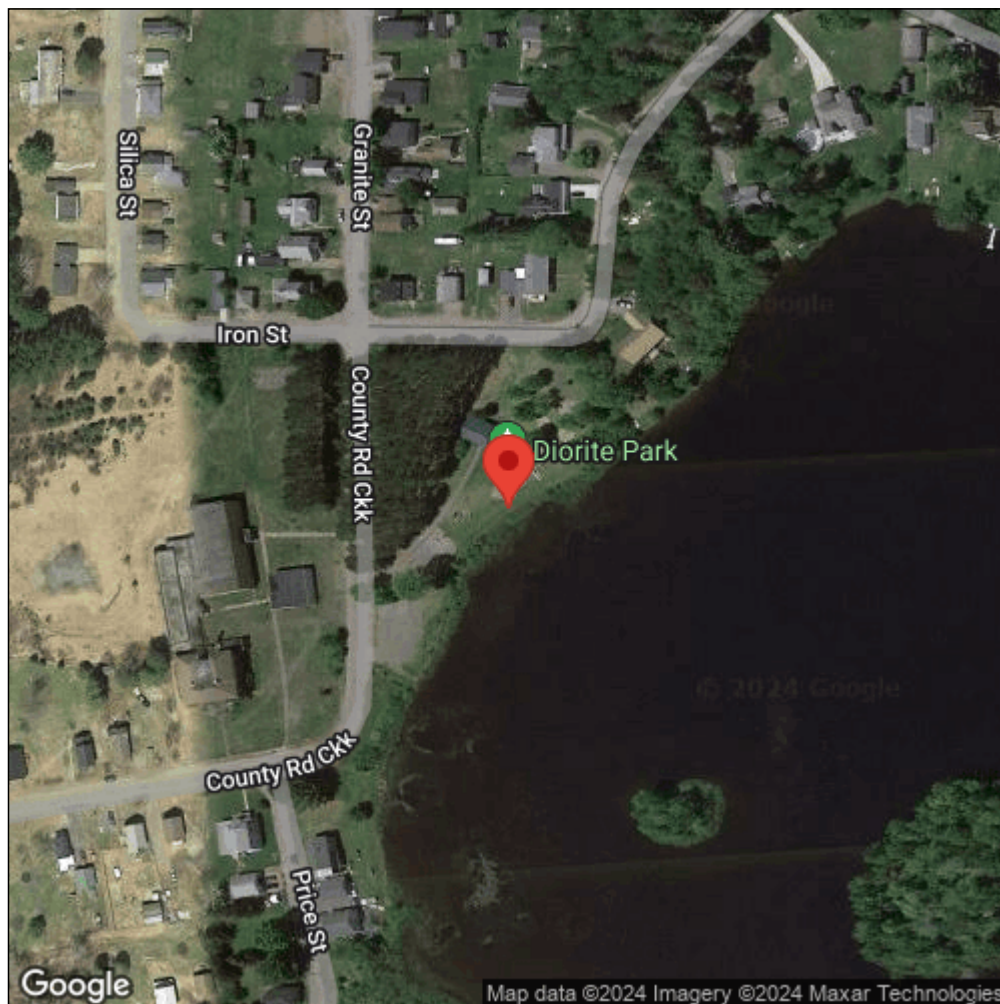
**Observation Date:** August 13, 2015

**Date Entered:** November 3, 2015

**Comments:** Original observer(s): XX - Boston Lake



Midwest Invasive Species  
Information Network



Source: MISIN. 2024. Midwest Invasive Species Information Network. Michigan State University - Applied Spatial Ecology and Technical Services Laboratory. This record is available online at <https://www.misin.msu.edu/report/misin/submit/summary/printRecord.php?obs=reprint&id=548566>