



Presence Observation

Starry stonewort

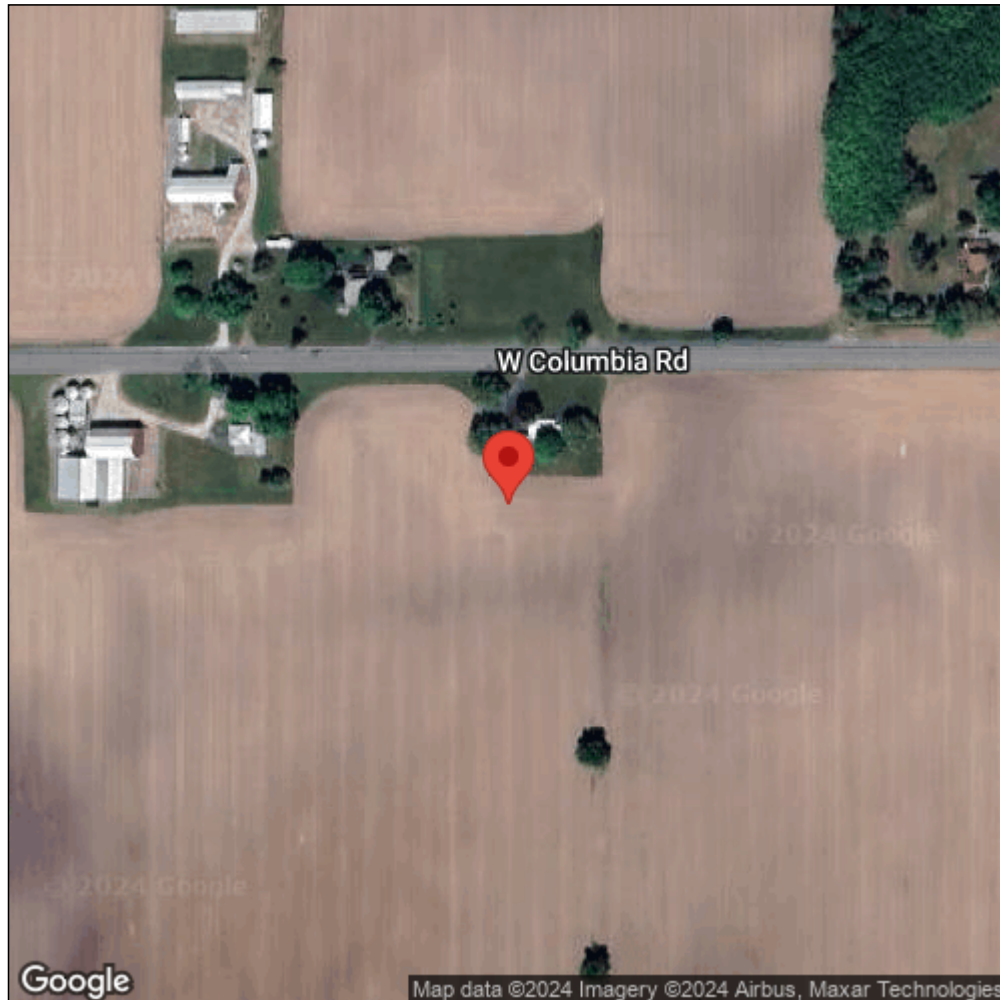
Nitellopsis obtusa



Record ID:	548607
Observer:	Heather Dame
Source:	Central Michigan University
Latitude:	42.581707
Longitude:	-84.498686
Area:	greater than 1 acre
Density:	Patchy
Observation Date:	August 1, 2015
Date Entered:	November 3, 2015
Comments:	Detected in Gun Lake as part of invasive plant treatment study. Density varied throughout summer and began to decline in late September. Assoc. mainly with Chara and patchy Vallisneria.



Midwest Invasive Species
Information Network



Source: MISIN. 2024. Midwest Invasive Species Information Network. Michigan State University - Applied Spatial Ecology and Technical Services Laboratory. This record is available online at <https://www.misin.msu.edu/report/misin/submit/summary/printRecord.php?obs=reprint&id=548607>