



## Presence Observation

### Purple loosestrife

*Lythrum salicaria*



**Record ID:** 549320

**Observer:** Emily Anderson

**Source:** Wild Rivers Invasive Species Coalition

**Latitude:** 46.420727

**Longitude:** -88.015656

**Area:** 1000 sq ft to 1/2 acre

**Density:** Dense

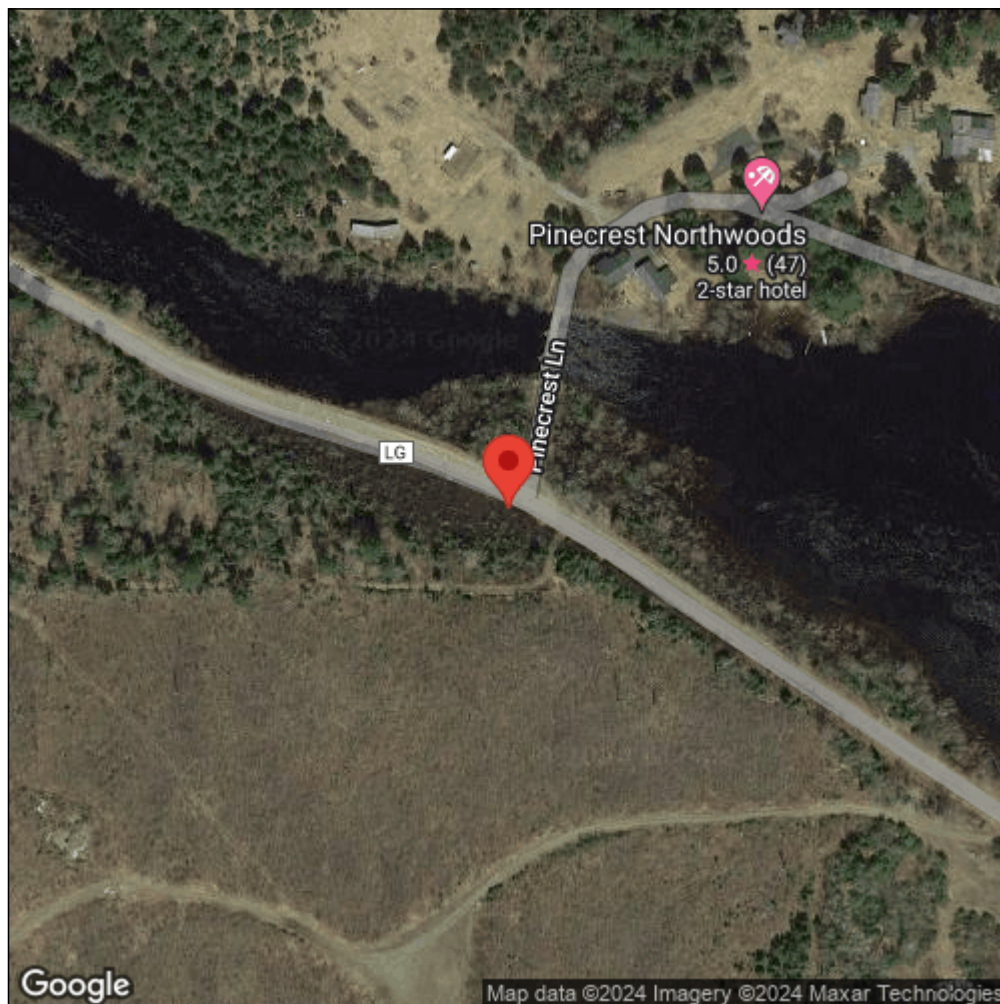
**Observation Date:** July 24, 2015

**Date Entered:** November 11, 2015

**Comments:** Original observer(s): Andrew Johnson - Ongoing biocontrol by WRISC (Michigan River - off River Rd) - Treatment: 1



Midwest Invasive Species  
Information Network



Source: MISIN. 2024. Midwest Invasive Species Information Network. Michigan State University - Applied Spatial Ecology and Technical Services Laboratory. This record is available online at <https://www.misin.msu.edu/report/misin/submit/summary/printRecord.php?obs=reprint&id=549320>