



Presence Observation

Curly pondweed

Potamogeton crispus



Record ID: 550233

Observer: Bulk Upload

Source: Tip of the Mitt Watershed Council

Latitude: 44.97900009

Longitude: -85.20290375

Area: 1/2 acre to 1 acre

Density: Sparse

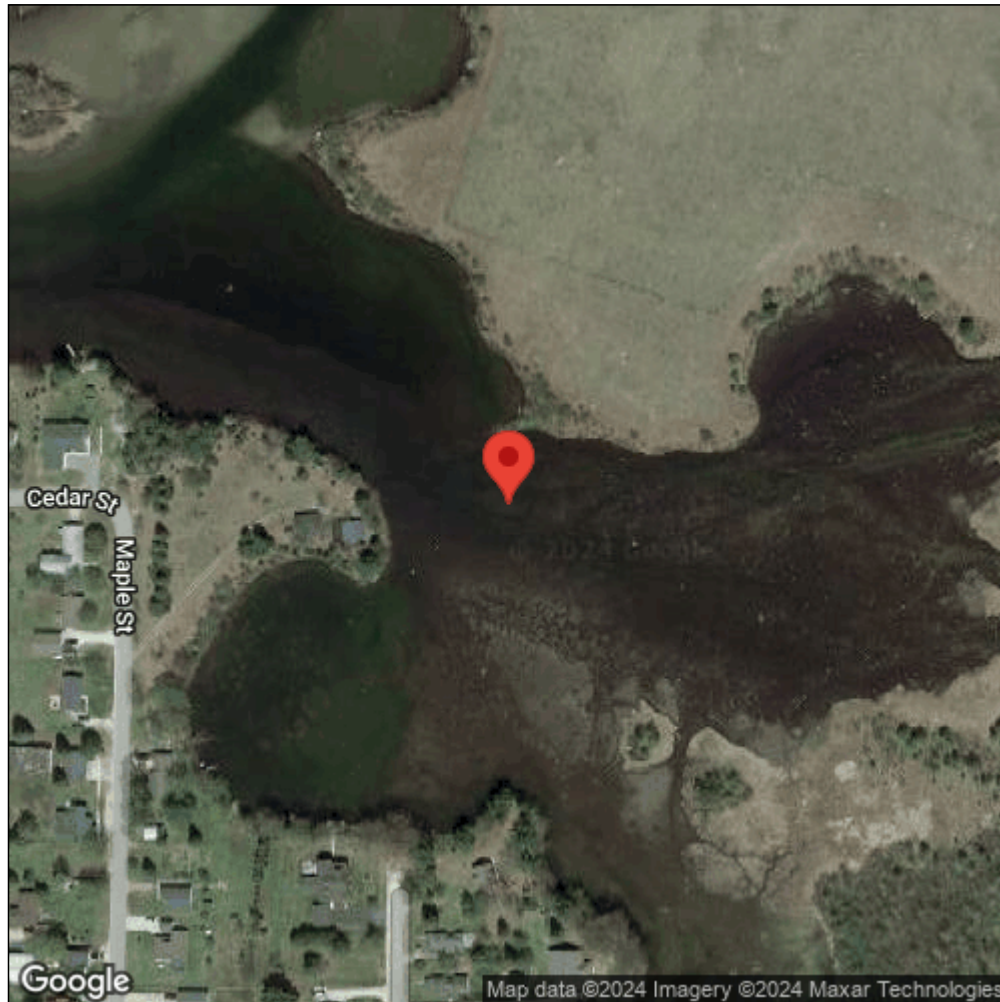
Observation Date: July 10, 2015

Date Entered: December 4, 2015

Comments: Original observer(s): Kate Laramie - Field ID: IR10 - Treatment: U



Midwest Invasive Species
Information Network



Source: MISIN. 2024. Midwest Invasive Species Information Network. Michigan State University - Applied Spatial Ecology and Technical Services Laboratory. This record is available online at <https://www.misin.msu.edu/report/misin/submit/summary/printRecord.php?obs=reprint&id=550233>