



## Presence Observation

### Narrow-leaved cat-tail

*Typha angustifolia*



**Record ID:** 550272

**Observer:** Bulk Upload

**Source:** Tip of the Mitt Watershed Council

**Latitude:** 44.97040176

**Longitude:** -85.21340179

**Area:** less than 1000 sq ft

**Density:** Patchy

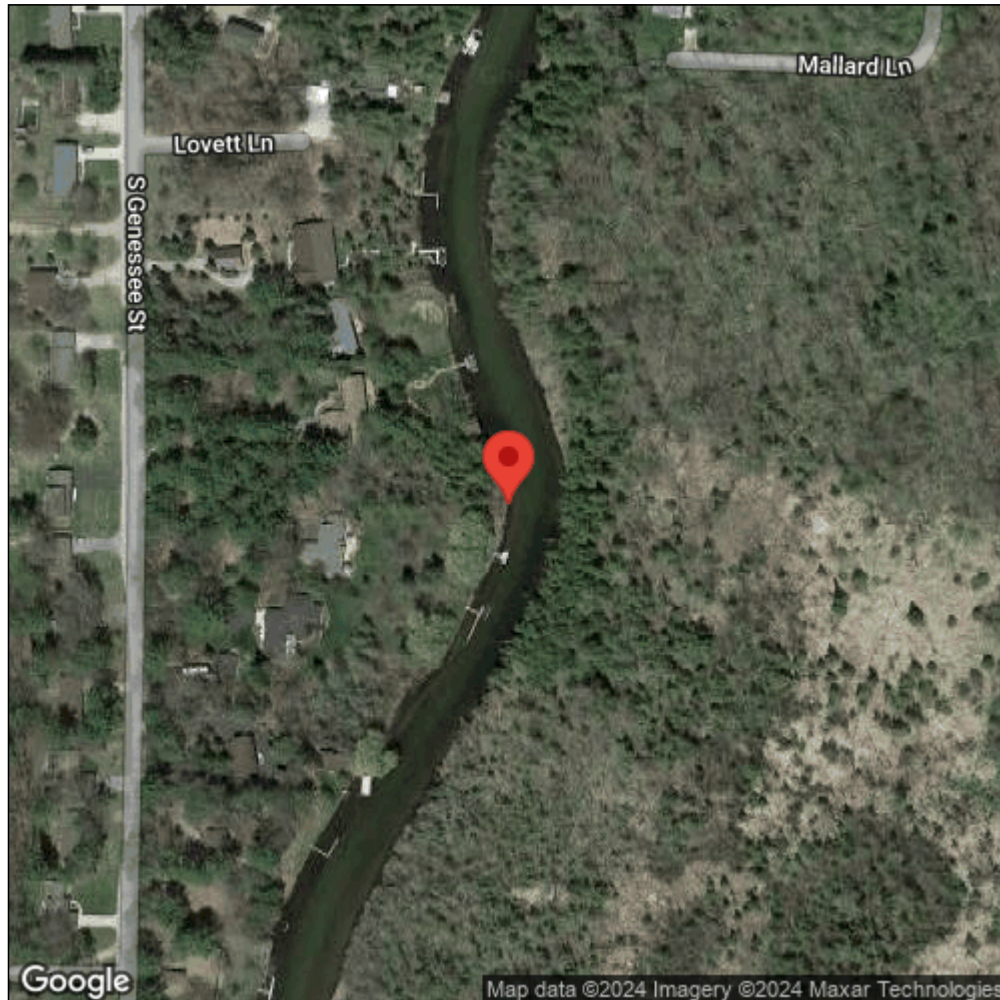
**Observation Date:** July 15, 2015

**Date Entered:** December 4, 2015

**Comments:** Original observer(s): Kate Laramie - Field ID: IR12 - Next to native patch - Treatment: U



Midwest Invasive Species  
Information Network



Source: MISIN. 2024. Midwest Invasive Species Information Network. Michigan State University - Applied Spatial Ecology and Technical Services Laboratory. This record is available online at <https://www.misin.msu.edu/report/misin/submit/summary/printRecord.php?obs=reprint&id=550272>