



Presence Observation

Purple loosestrife

Lythrum salicaria



Record ID: 550343

Observer: Bulk Upload

Source: Tip of the Mitt Watershed Council

Latitude: 45.12049866

Longitude: -85.25029755

Area: less than 1000 sq ft

Density: Sparse

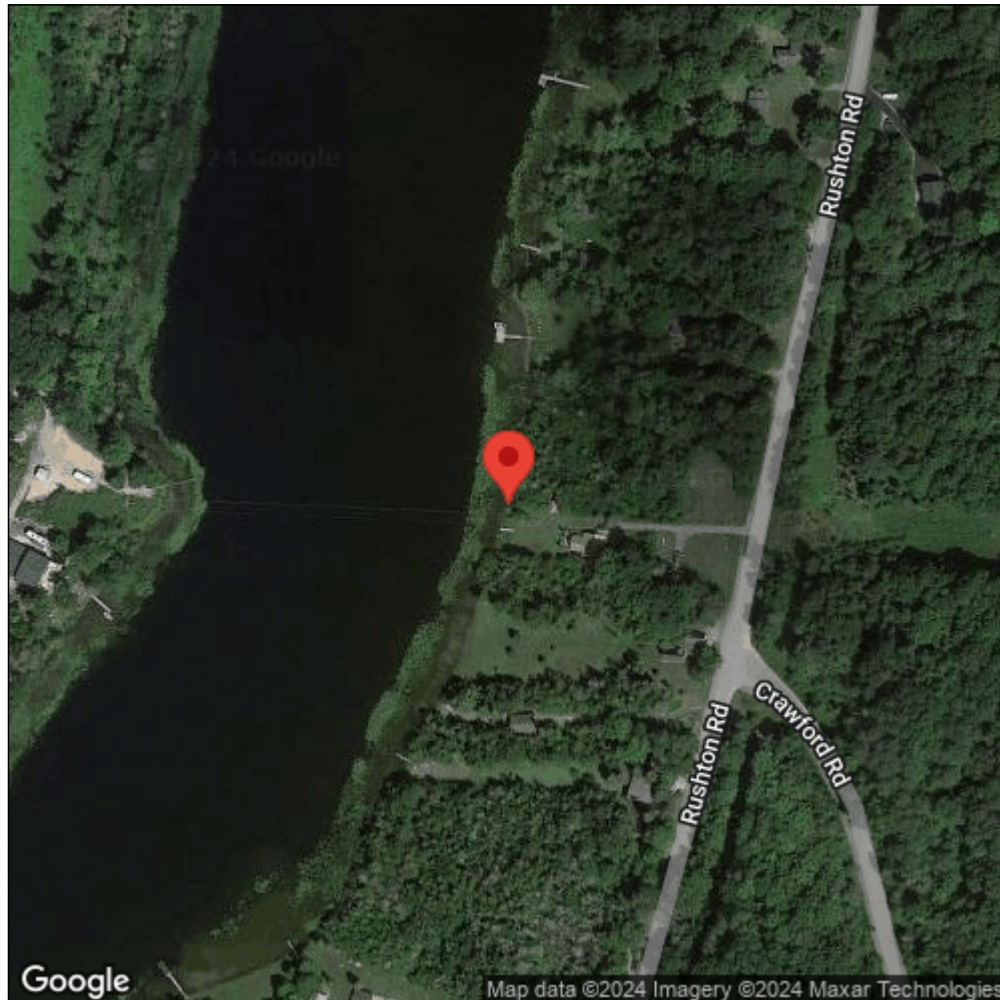
Observation Date: August 4, 2014

Date Entered: December 4, 2015

Comments: Original observer(s): Meghan Hemken - Field ID: WIL01 - Treatment: U



Midwest Invasive Species
Information Network



Source: MISIN. 2024. Midwest Invasive Species Information Network. Michigan State University - Applied Spatial Ecology and Technical Services Laboratory.
This record is available online at <https://www.misin.msu.edu/report/misin/submit/summary/printRecord.php?obs=reprint&id=550343>