



## Presence Observation

### Purple loosestrife

*Lythrum salicaria*



**Record ID:** 550388

**Observer:** Dan Myers

**Source:** Tip of the Mitt Watershed Council

**Latitude:** 45.04930115

**Longitude:** -85.25769806

**Area:** Individual/Few/Several

**Density:** Sparse

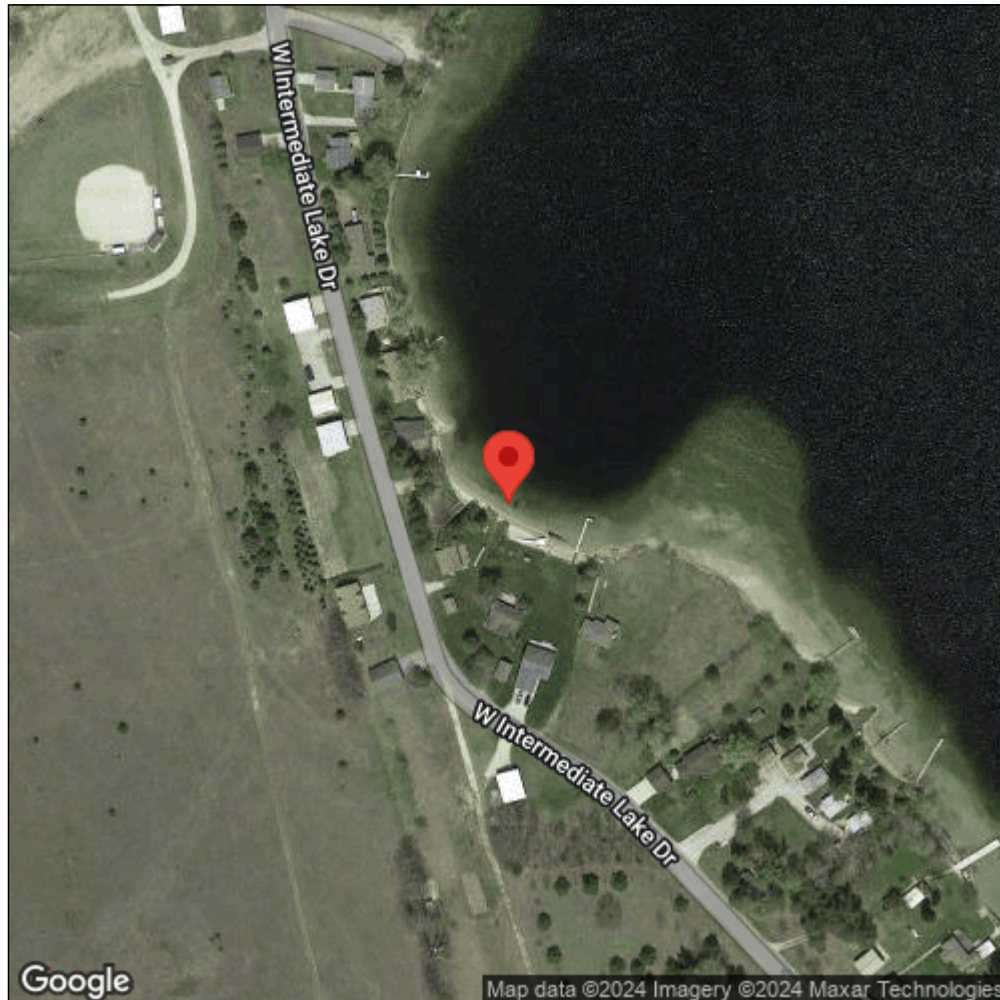
**Observation Date:** August 25, 2014

**Date Entered:** December 4, 2015

**Comments:** Field ID: ILAIS07 - Treatment: U



Midwest Invasive Species  
Information Network



Source: MISIN. 2024. Midwest Invasive Species Information Network. Michigan State University - Applied Spatial Ecology and Technical Services Laboratory. This record is available online at <https://www.misin.msu.edu/report/misin/submit/summary/printRecord.php?obs=reprint&id=550388>