



Presence Observation

European waterclover

Marsilea quadrifolia



Record ID: 550599

Observer: Ben Luukkonen

Source: MI DNR Wildlife Division

Latitude: 42.64402

Longitude: -83.40472

Area: less than 1000 sq ft

Density: Patchy

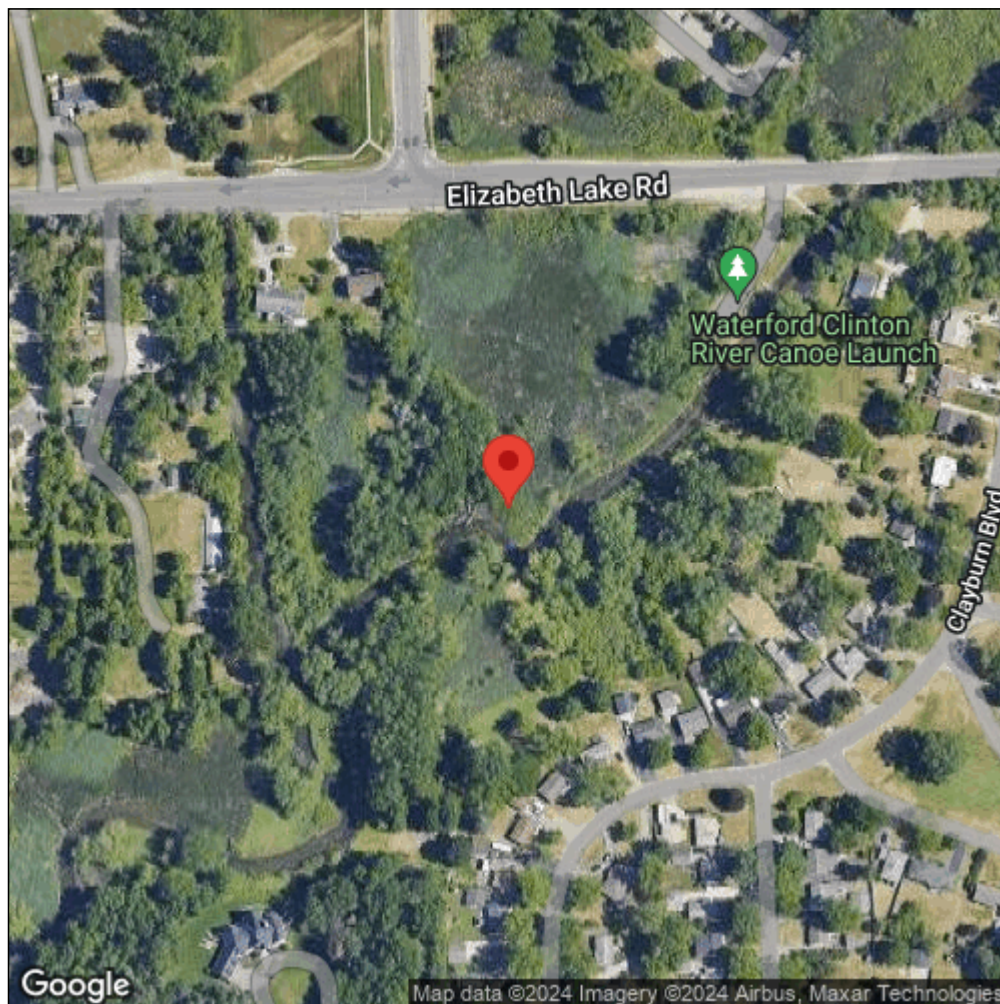
Observation Date: June 3, 2015

Date Entered: January 7, 2016

Comments: Location: Clinton River/ Waterford Twp - Water body: Clinton River



Midwest Invasive Species
Information Network



Source: MISIN. 2024. Midwest Invasive Species Information Network. Michigan State University - Applied Spatial Ecology and Technical Services Laboratory. This record is available online at <https://www.misin.msu.edu/report/misin/submit/summary/printRecord.php?obs=reprint&id=550599>