



Presence Observation

European waterclover

Marsilea quadrifolia



Record ID: 551269

Observer: Ben Luukkonen

Source: MI DNR Wildlife Division

Latitude: 42.60866

Longitude: -83.37483

Area: Individual/Few/Several

Density: Sparse

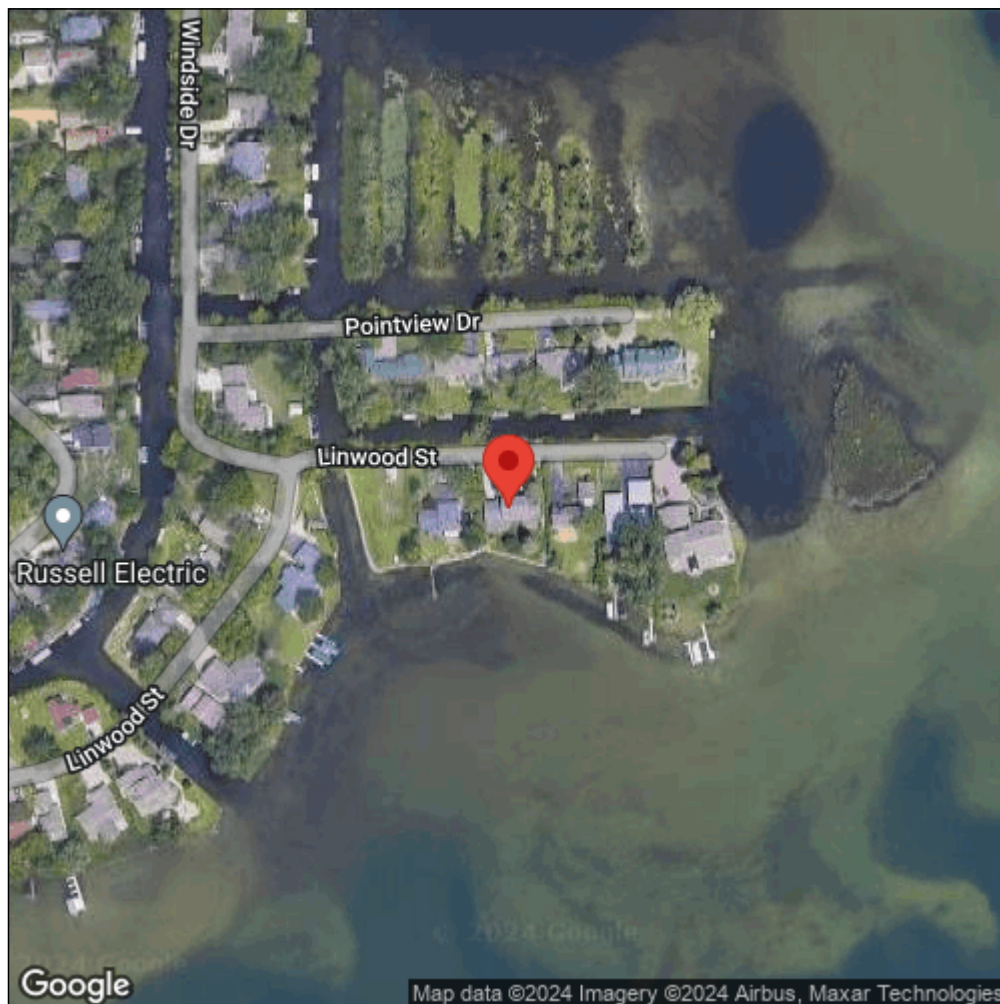
Observation Date: September 23, 2015

Date Entered: January 7, 2016

Comments: Location: Cass Lake - Water body: Cass Lake/Clinton River



Midwest Invasive Species
Information Network



Source: MISIN. 2024. Midwest Invasive Species Information Network. Michigan State University - Applied Spatial Ecology and Technical Services Laboratory. This record is available online at <https://www.misin.msu.edu/report/misin/submit/summary/printRecord.php?obs=reprint&id=551269>