



Presence Observation

Reed canarygrass

Phalaris arundinacea



Record ID: 554708

Observer: Douglas Campbell

Source: MISIN

Latitude: 43.52629083

Longitude: -83.88347614

Area: 1000 sq ft to 1/2 acre

Density: Dense

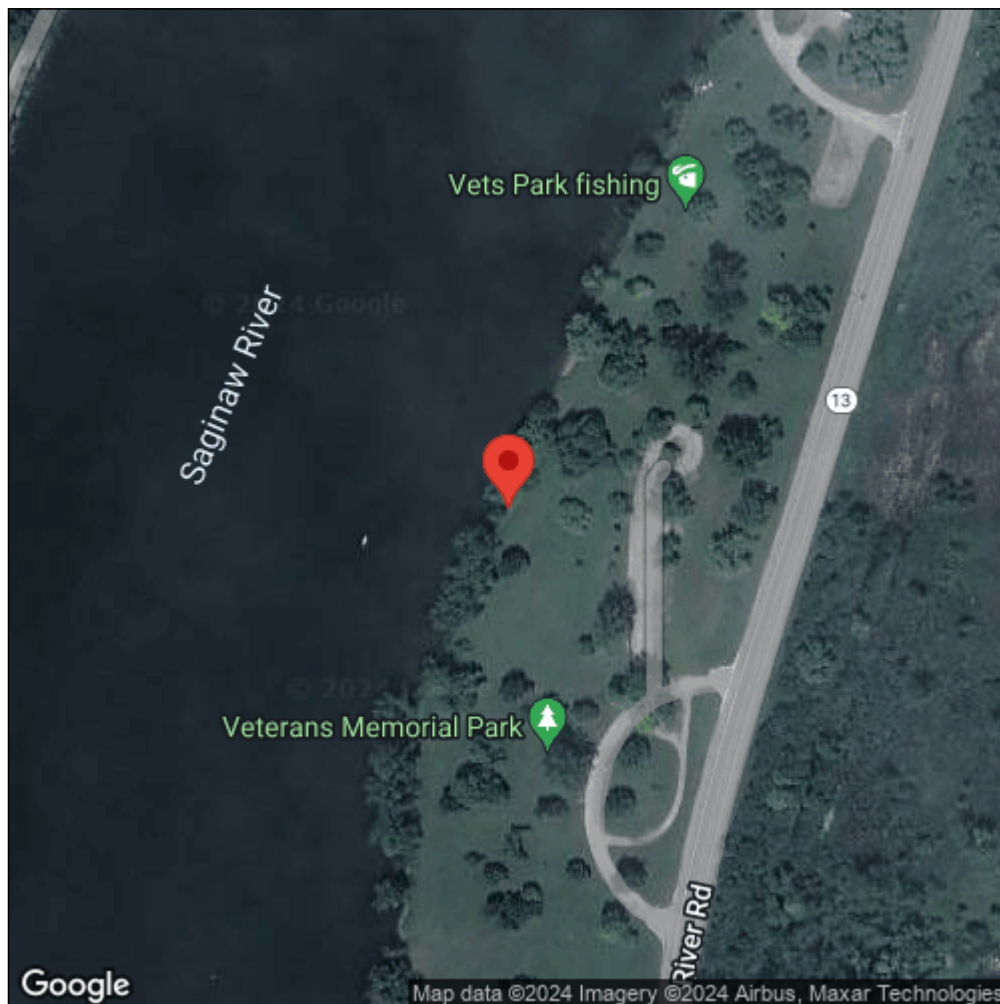
Observation Date: April 14, 2016

Date Entered: April 21, 2016

Comments: from Android; gps accuracy: 6meters



Midwest Invasive Species
Information Network



Source: MISIN. 2024. Midwest Invasive Species Information Network. Michigan State University - Applied Spatial Ecology and Technical Services Laboratory.
This record is available online at <https://www.misin.msu.edu/report/misin/submit/summary/printRecord.php?obs=reprint&id=554708>