



## Presence Observation

### Watercress

*Nasturtium officinale*



**Record ID:** 555415

**Observer:** Douglas Campbell

**Source:** MISIN

**Latitude:** 43.78206213

**Longitude:** -83.98805232

**Area:** 1/2 acre to 1 acre

**Density:** Dense

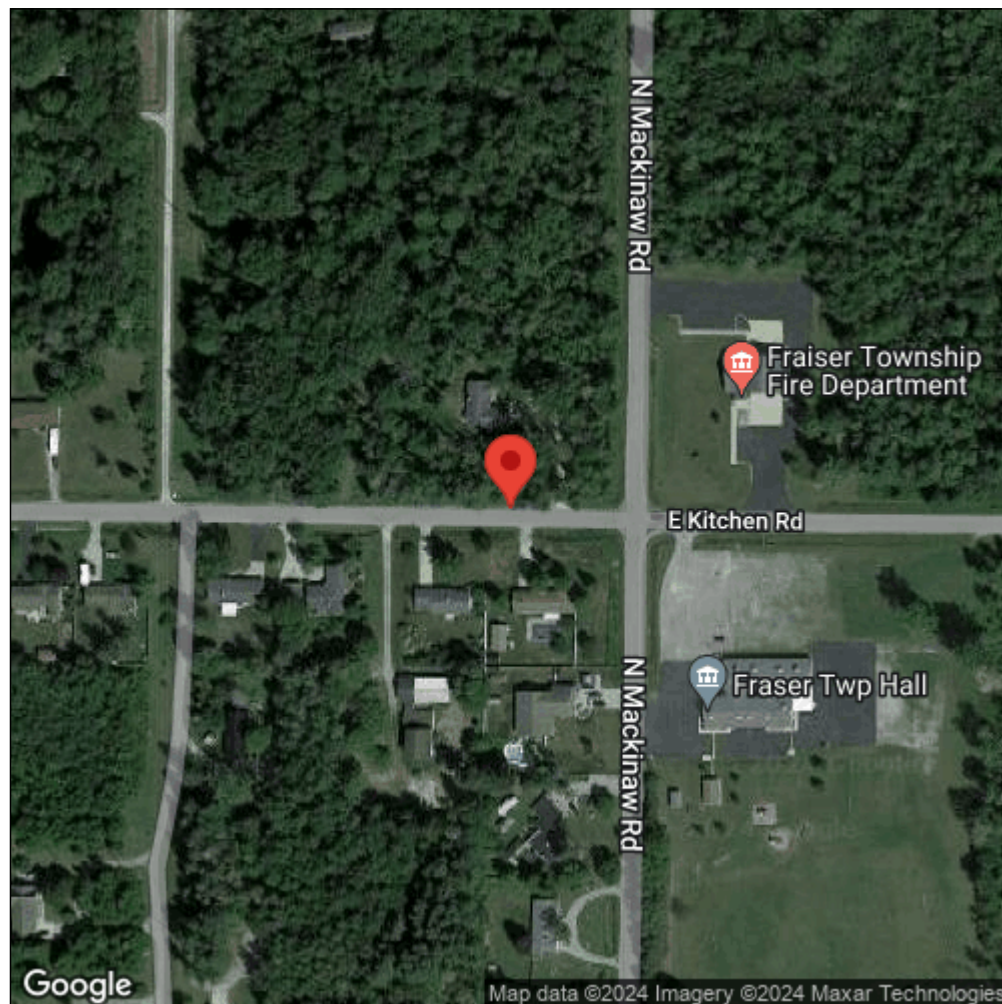
**Observation Date:** May 13, 2016

**Date Entered:** May 19, 2016

**Comments:** from Android; gps accuracy: 7meters



Midwest Invasive Species  
Information Network



Source: MISIN. 2024. Midwest Invasive Species Information Network. Michigan State University - Applied Spatial Ecology and Technical Services Laboratory. This record is available online at <https://www.misin.msu.edu/report/misin/submit/summary/printRecord.php?obs=reprint&id=555415>