



Midwest Invasive Species  
Information Network

## Presence Observation

### Reed canarygrass

*Phalaris arundinacea*



**Record ID:** 558056

**Observer:** Kip Cronk

**Source:** MISIN

**Latitude:** 43.62951898

**Longitude:** -84.29186728

**Area:** 1/2 acre to 1 acre

**Density:** Dense

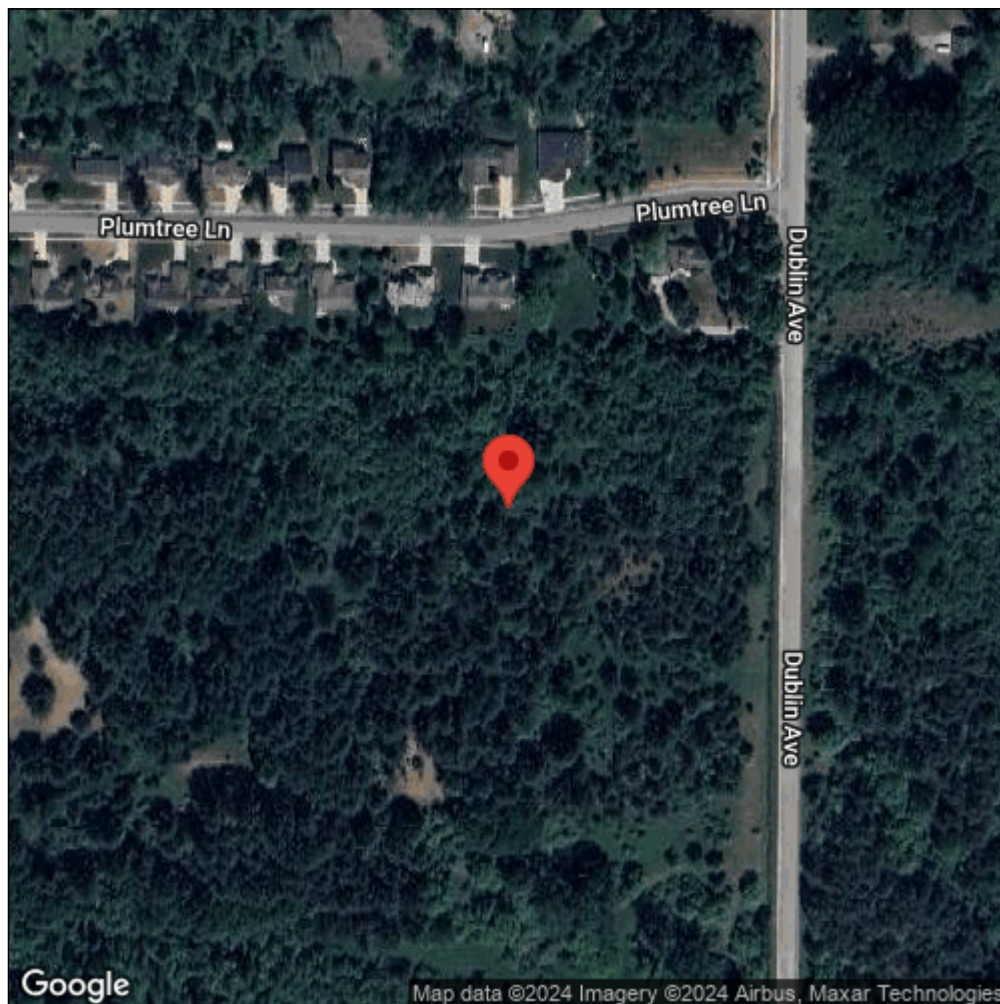
**Observation Date:** May 13, 2016

**Date Entered:** June 1, 2016

**Comments:** from iOS; gps accuracy: 5meters



Midwest Invasive Species  
Information Network



Source: MISIN. 2024. Midwest Invasive Species Information Network. Michigan State University - Applied Spatial Ecology and Technical Services Laboratory. This record is available online at <https://www.misin.msu.edu/report/misin/submit/summary/printRecord.php?obs=reprint&id=558056>