



Presence Observation

Reed canarygrass

Phalaris arundinacea



Record ID: 558058

Observer: Kip Cronk

Source: MISIN

Latitude: 43.62957103

Longitude: -84.29049047

Area: 1000 sq ft to 1/2 acre

Density: Patchy

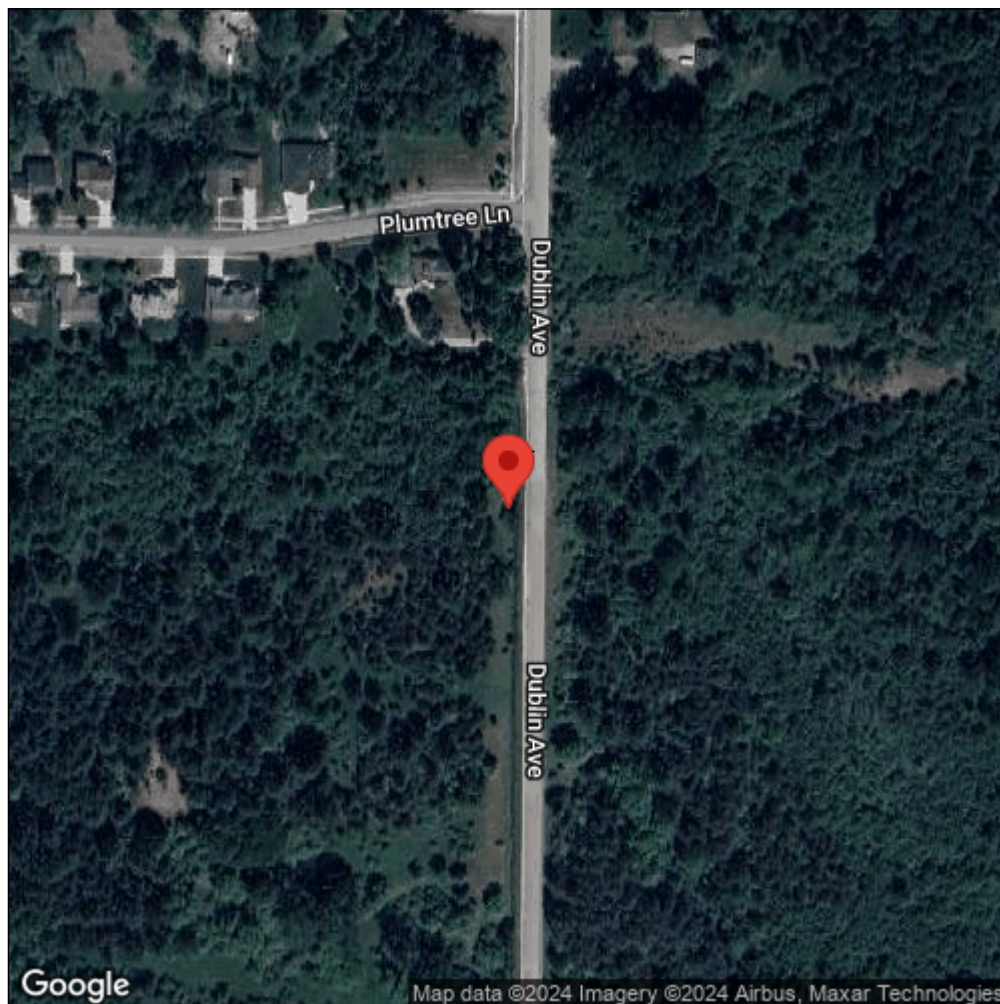
Observation Date: June 1, 2016

Date Entered: June 1, 2016

Comments: from iOS; gps accuracy: 5meters Many clumps in drain.



Midwest Invasive Species
Information Network



Source: MISIN. 2024. Midwest Invasive Species Information Network. Michigan State University - Applied Spatial Ecology and Technical Services Laboratory. This record is available online at <https://www.misin.msu.edu/report/misin/submit/summary/printRecord.php?obs=reprint&id=558058>