



Midwest Invasive Species
Information Network

Presence Observation

Reed canarygrass

Phalaris arundinacea



Record ID: 558280

Observer: Fallon Januska

Source: MISIN

Latitude: 43.31282016

Longitude: -84.14315136

Area: greater than 1 acre

Density: Patchy

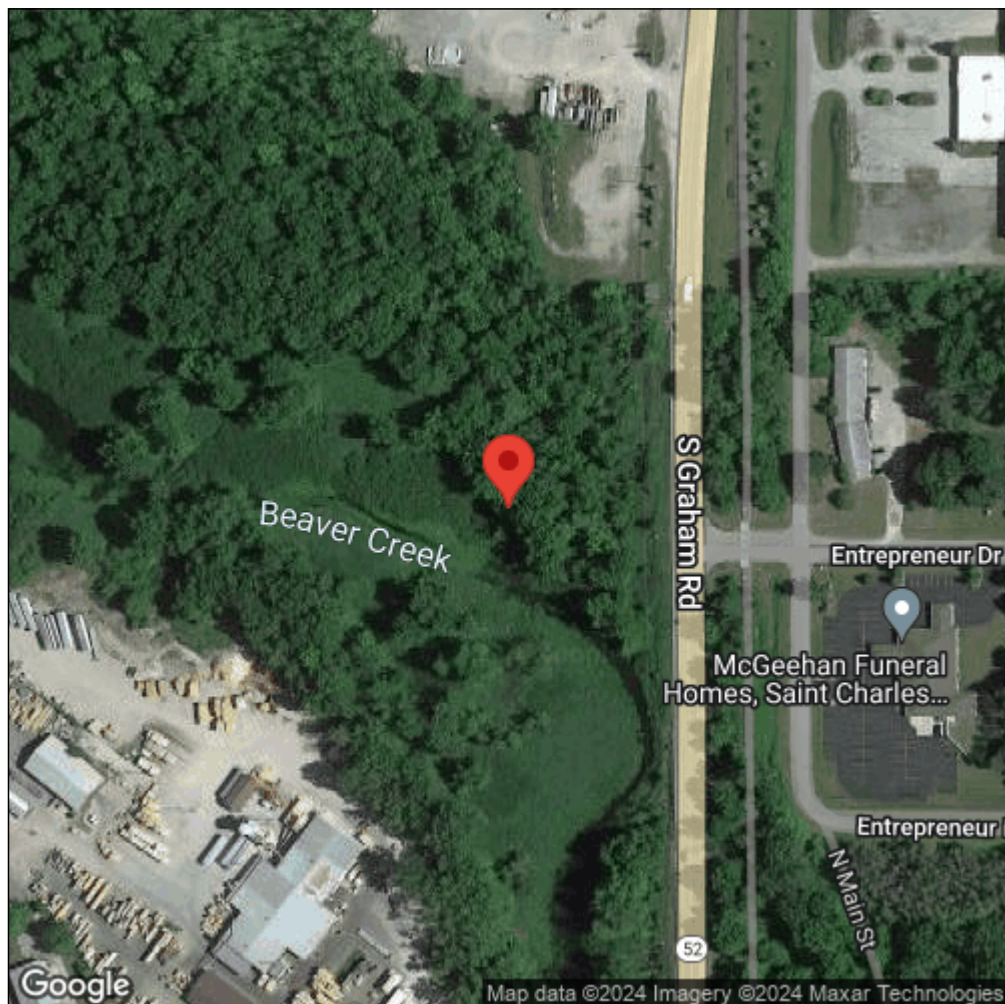
Observation Date: June 9, 2016

Date Entered: June 9, 2016

Comments: from iOS; gps accuracy: 5meters



Midwest Invasive Species
Information Network



Source: MISIN. 2024. Midwest Invasive Species Information Network. Michigan State University - Applied Spatial Ecology and Technical Services Laboratory.
This record is available online at <https://www.misin.msu.edu/report/misin/submit/summary/printRecord.php?obs=reprint&id=558280>