



Midwest Invasive Species  
Information Network

## Presence Observation

### Reed canarygrass

*Phalaris arundinacea*



**Record ID:** 558409

**Observer:** Fallon Januska

**Source:** MISIN

**Latitude:** 43.62677529

**Longitude:** -83.79974211

**Area:** greater than 1 acre

**Density:** Sparse

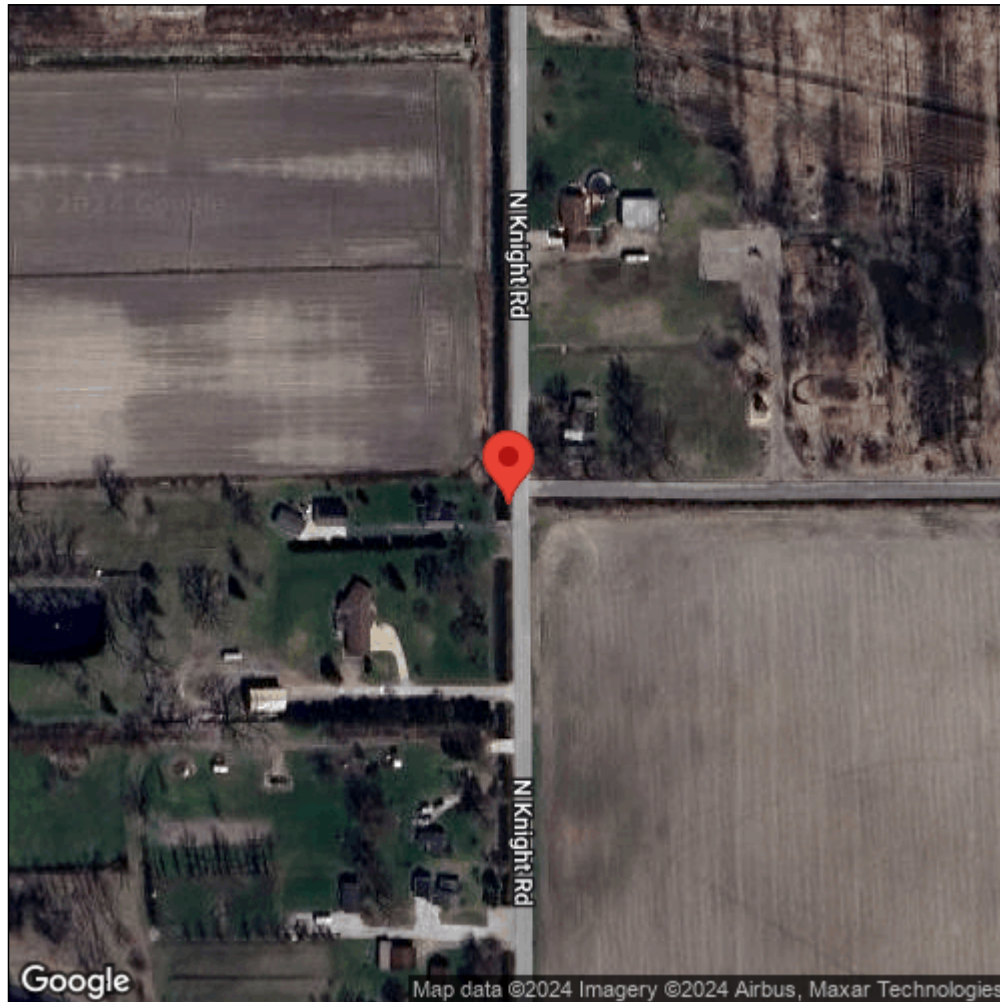
**Observation Date:** June 13, 2016

**Date Entered:** June 14, 2016

**Comments:** from iOS; gps accuracy: 5meters



Midwest Invasive Species  
Information Network



Source: MISIN. 2024. Midwest Invasive Species Information Network. Michigan State University - Applied Spatial Ecology and Technical Services Laboratory. This record is available online at <https://www.misin.msu.edu/report/misin/submit/summary/printRecord.php?obs=reprint&id=558409>