



Midwest Invasive Species  
Information Network

## Presence Observation

### Reed canarygrass

*Phalaris arundinacea*



**Record ID:** 565058

**Observer:** Bridgett Bell

**Source:** MISIN

**Latitude:** 44.76851581

**Longitude:** -84.62774514

**Area:** Individual/Few/Several

**Density:** Sparse

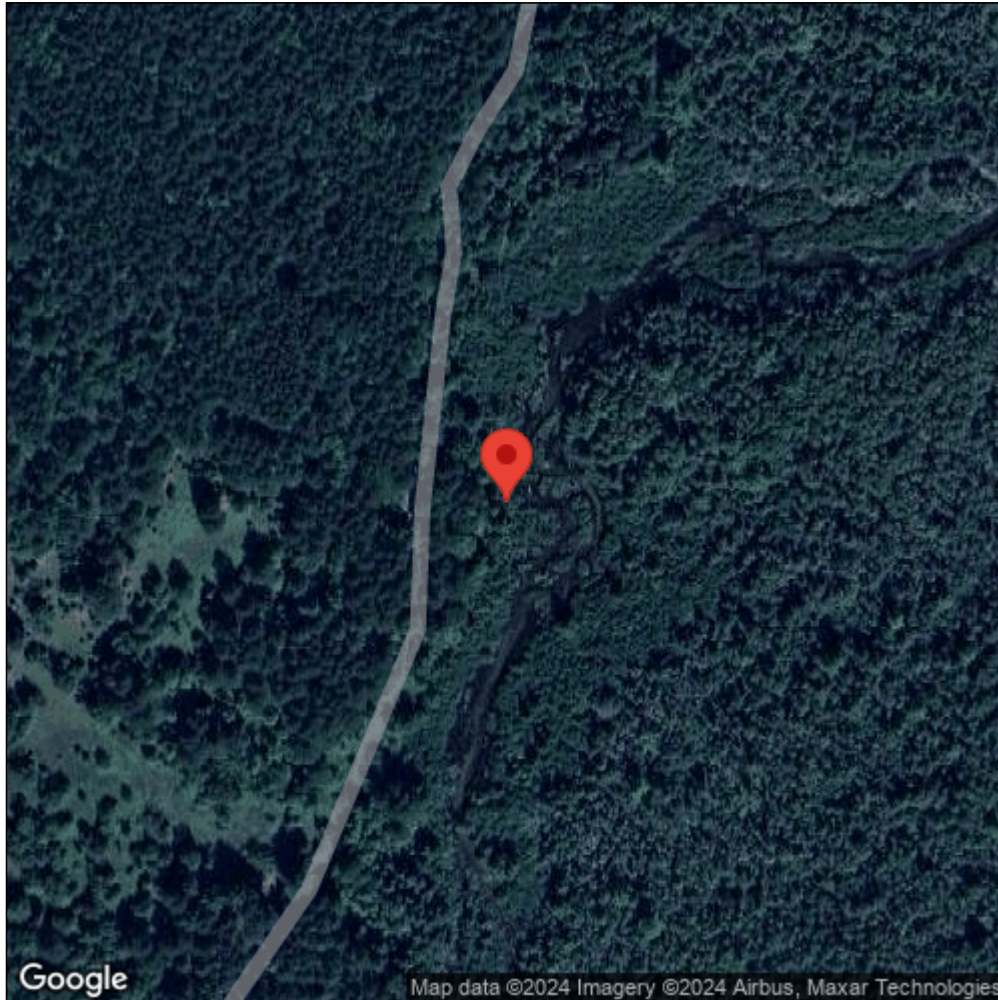
**Observation Date:** July 27, 2016

**Date Entered:** July 27, 2016

**Comments:** from iOS; gps accuracy: 5meters



Midwest Invasive Species  
Information Network



Source: MISIN. 2024. Midwest Invasive Species Information Network. Michigan State University - Applied Spatial Ecology and Technical Services Laboratory. This record is available online at <https://www.misin.msu.edu/report/misin/submit/summary/printRecord.php?obs=reprint&id=565058>