



Midwest Invasive Species  
Information Network

## Presence Observation

### Purple loosestrife

*Lythrum salicaria*



**Record ID:** 566118

**Observer:** Sarah Nelson

**Source:** MISIN

**Latitude:** 42.60207358

**Longitude:** -85.39237554

**Area:** greater than 1 acre

**Density:** Dense

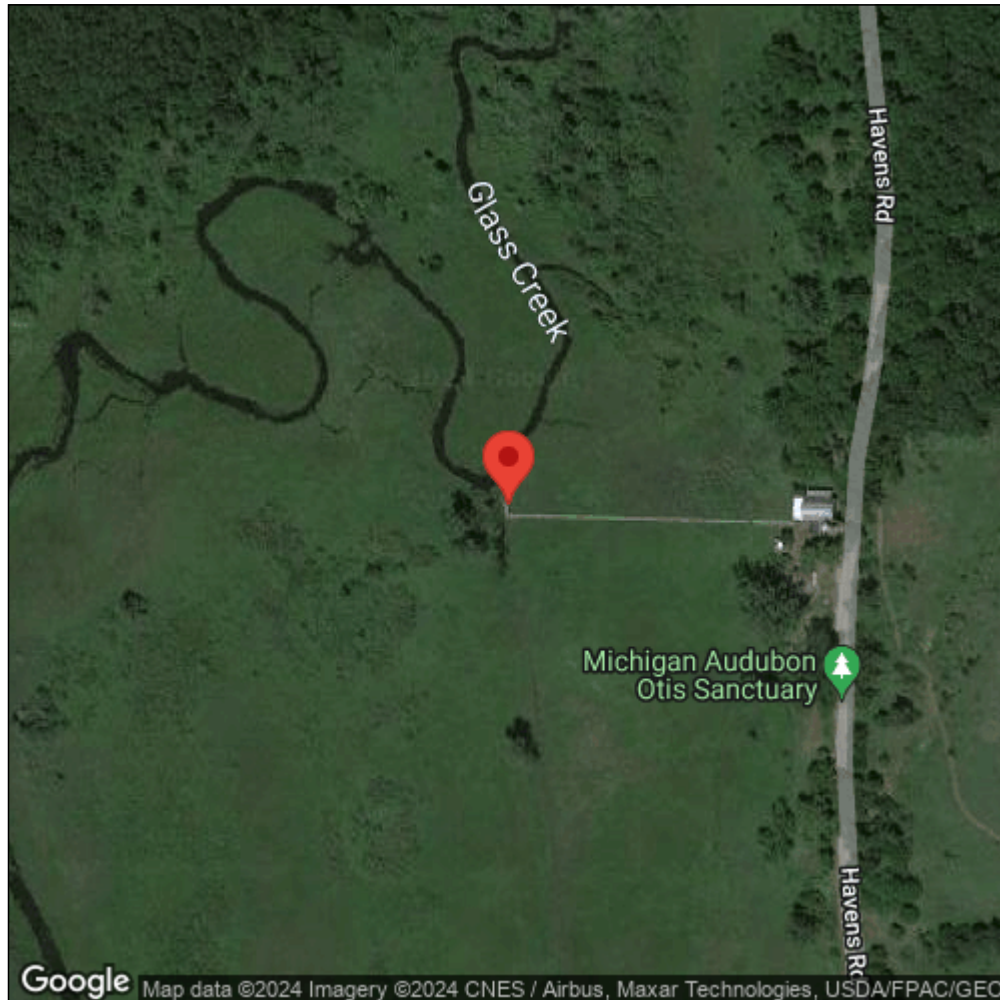
**Observation Date:** August 6, 2016

**Date Entered:** August 6, 2016

**Comments:** from iOS; gps accuracy: 5meters There are some patchy areas and one very dense area



Midwest Invasive Species  
Information Network



Source: MISIN. 2024. Midwest Invasive Species Information Network. Michigan State University - Applied Spatial Ecology and Technical Services Laboratory. This record is available online at <https://www.misin.msu.edu/report/misin/submit/summary/printRecord.php?obs=reprint&id=566118>