



Presence Observation

Eurasian watermilfoil

Myriophyllum spicatum



Record ID: 572900

Observer: Jo Latimore

Source: MISIN

Latitude: 43.93135412

Longitude: -91.30879462

Area: 1000 sq ft to 1/2 acre

Density: Patchy

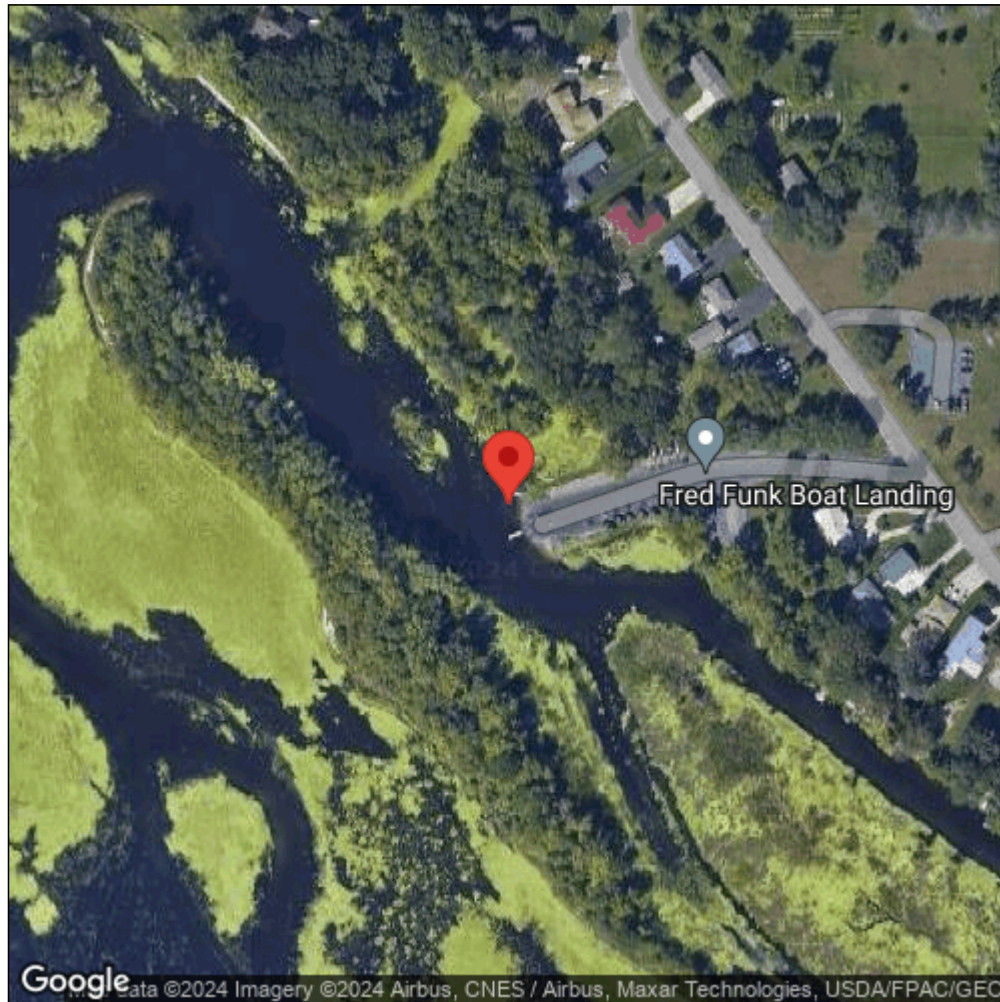
Observation Date: October 17, 2016

Date Entered: October 18, 2016

Comments: Found in patches while canoeing. Water clarity prevented good estimate of area. Interspersed with curly-leaf pondweed (reported separately).



Midwest Invasive Species
Information Network



Source: MISIN. 2024. Midwest Invasive Species Information Network. Michigan State University - Applied Spatial Ecology and Technical Services Laboratory. This record is available online at <https://www.misin.msu.edu/report/misin/submit/summary/printRecord.php?obs=reprint&id=572900>