



## Presence Observation

### Narrow-leaved cat-tail

*Typha angustifolia*



**Record ID:** 579318

**Observer:** Jane Perrino

**Source:** Grand Traverse Conservation District

**Latitude:** 44.56288

**Longitude:** -85.475703

**Area:** 1000 sq ft to 1/2 acre

**Density:** Dense

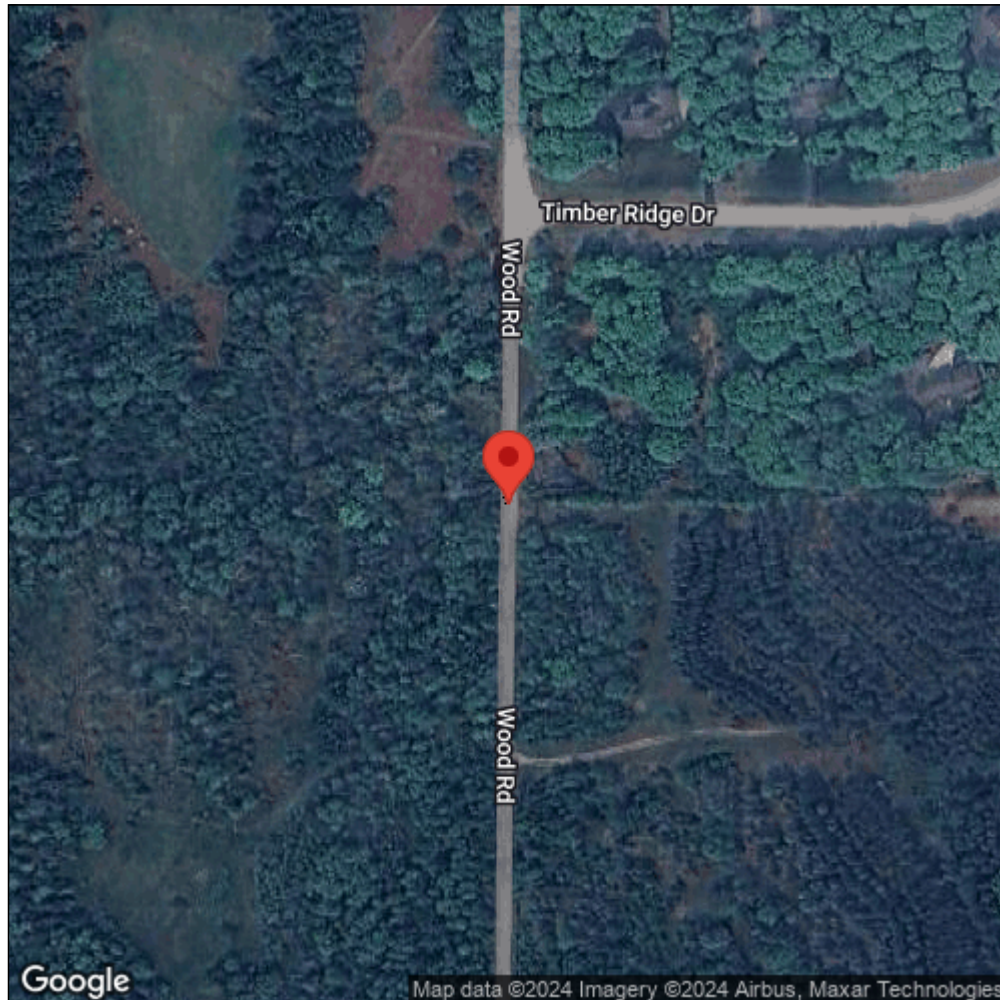
**Observation Date:** August 19, 2016

**Date Entered:** December 29, 2016

**Comments:** GTJPNC32733 - Elevated wetland - Elevated wetland - Flag, Blue -  
Altitude: 306.7 - garmin Oregon 600 S



Midwest Invasive Species  
Information Network



Source: MISIN. 2024. Midwest Invasive Species Information Network. Michigan State University - Applied Spatial Ecology and Technical Services Laboratory. This record is available online at <https://www.misin.msu.edu/report/misin/submit/summary/printRecord.php?obs=reprint&id=579318>