



## Presence Observation

### Amphipod (*E. ischnus*)

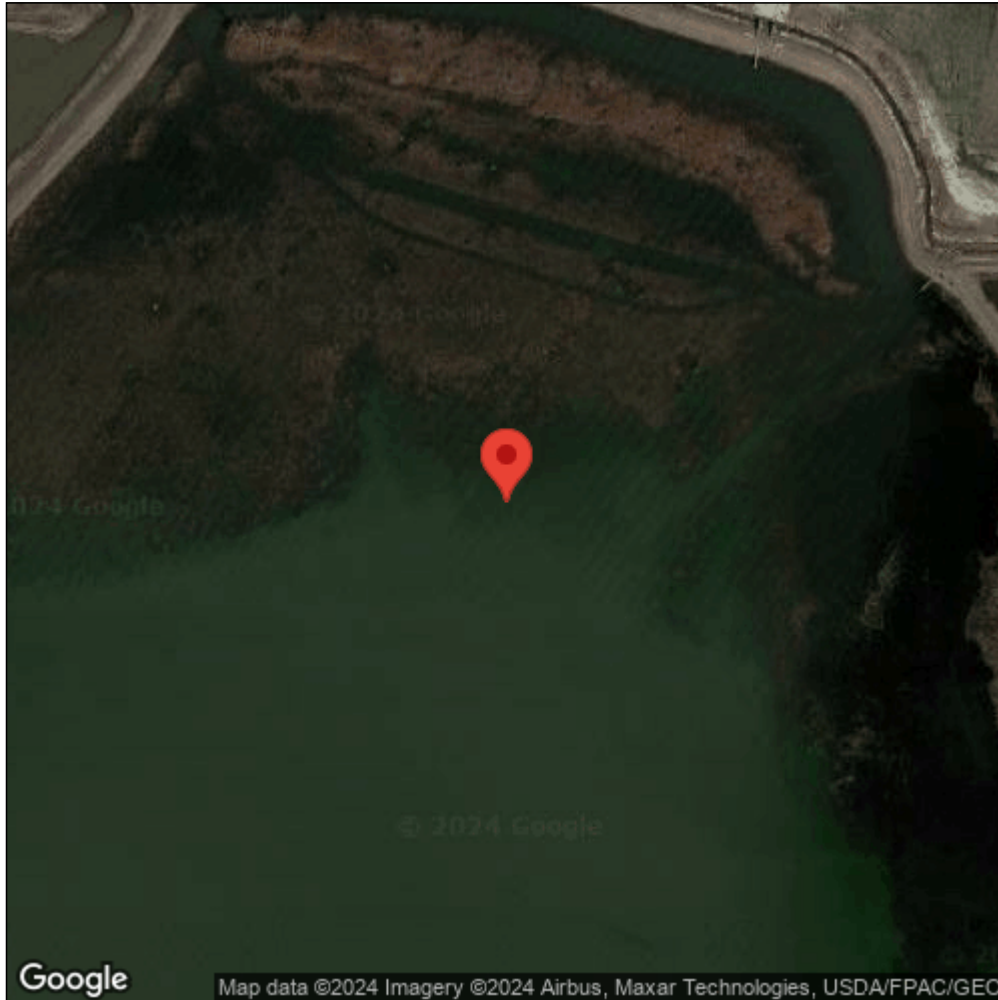
#### *Echinogammarus ischnus*



Record ID:	587398
Observer:	Josh Dumke
Source:	GLCMP: invertebrate dataset through 2015
Latitude:	41.761407
Longitude:	-83.456215
Area:	Not Reported
Density:	Few (less than 5)
Observation Date:	June 11, 2012
Date Entered:	January 12, 2017
Comments:	Great Lakes Coastal Wetland Mon Prj - Lake Erie - Total found: 1 - Site Name: 1933 BENCHMARK:North Maumee Bay Area Wetland - Collection: Dnet - Contribute: D. Uzarski, Central Michigan University, MI (uzars1dg@cmich.edu)



Midwest Invasive Species  
Information Network



Source: MISIN. 2024. Midwest Invasive Species Information Network. Michigan State University - Applied Spatial Ecology and Technical Services Laboratory. This record is available online at <https://www.misin.msu.edu/report/misin/submit/summary/printRecord.php?obs=reprint&id=587398>