



## Presence Observation

### Zebra mussel

*Dreissena polymorpha*



**Record ID:** 587459

**Observer:** Josh Dumke

**Source:** GLCMP: invertebrate dataset through 2015

**Latitude:** 43.572695

**Longitude:** -83.891241

**Area:** Not Reported

**Density:** Few (less than 5)

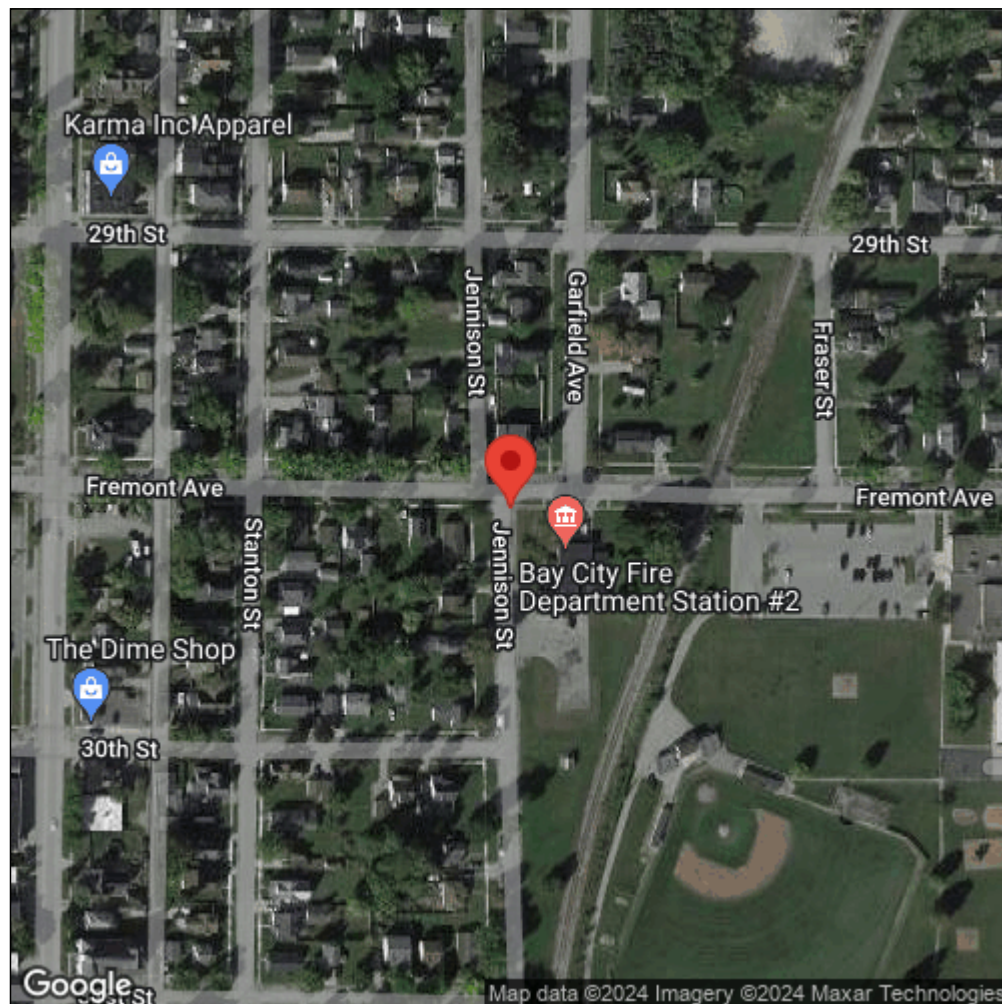
**Observation Date:** June 25, 2015

**Date Entered:** January 12, 2017

**Comments:** Great Lakes Coastal Wetland Mon Prj - Lake Huron - Total found: 1 -  
Site Name: 524|Saginaw Bay River - Collection: Dnet - Contribute: D.  
Uzarski, Central Michigan University, MI (uzars1dg@cmich.edu)



Midwest Invasive Species  
Information Network



Source: MISIN. 2024. Midwest Invasive Species Information Network. Michigan State University - Applied Spatial Ecology and Technical Services Laboratory. This record is available online at <https://www.misin.msu.edu/report/misin/submit/summary/printRecord.php?obs=reprint&id=587459>