



## Presence Observation

### Purple loosestrife

*Lythrum salicaria*



**Record ID:** 588544

**Observer:** Mindy Otto

**Source:** CUPCWMA

**Latitude:** 46.46592

**Longitude:** -87.89733

**Area:** Not Reported

**Density:** Not Reported

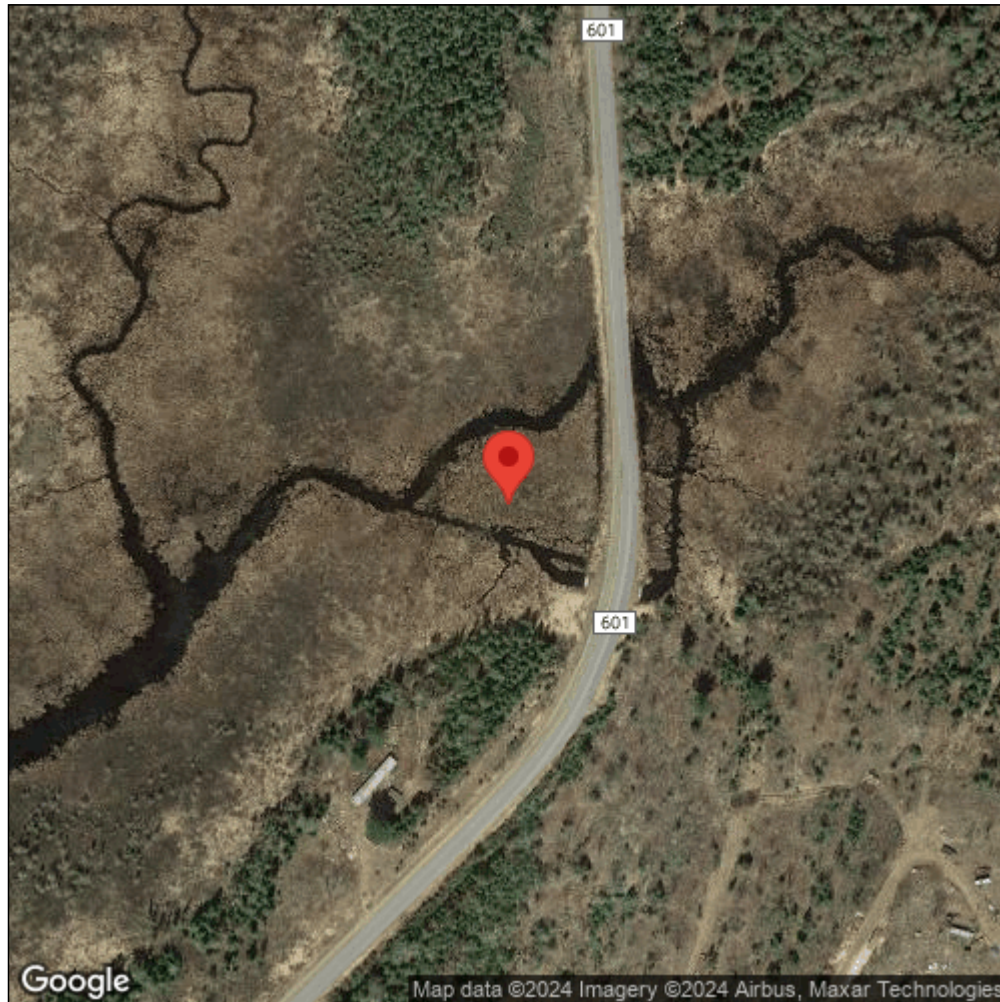
**Observation Date:** July 27, 2016

**Date Entered:** January 17, 2017

**Comments:** Co Rd 601 - Biocontrol - Volunteers: N



Midwest Invasive Species  
Information Network



Source: MISIN. 2024. Midwest Invasive Species Information Network. Michigan State University - Applied Spatial Ecology and Technical Services Laboratory. This record is available online at <https://www.misin.msu.edu/report/misin/submit/summary/printRecord.php?obs=reprint&id=588544>