



## Presence Observation

### Purple loosestrife

*Lythrum salicaria*



**Record ID:** 591232

**Observer:** Darcy Rutkowski

**Source:** Upper Peninsula Invasives Council

**Latitude:** 46.38734

**Longitude:** -86.84807

**Area:** Individual/Few/Several

**Density:** Sparse

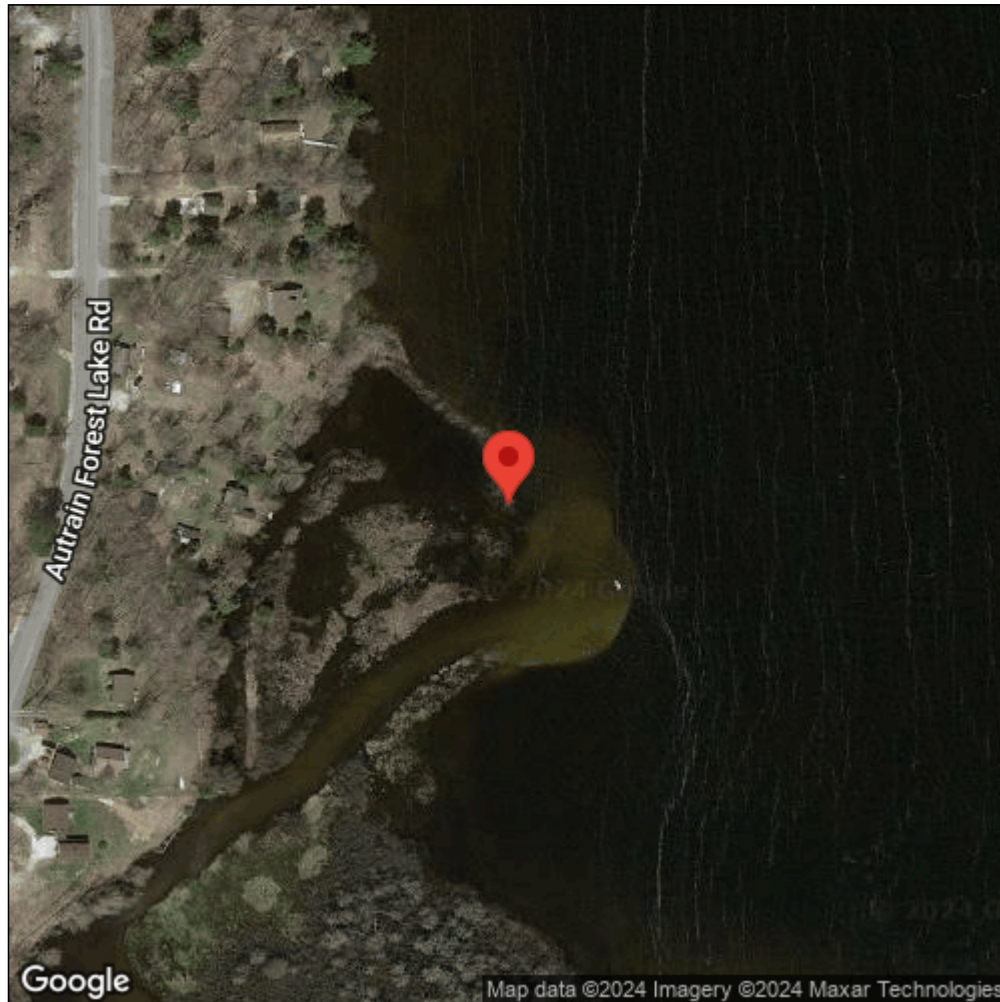
**Observation Date:** August 2, 2016

**Date Entered:** February 16, 2017

**Comments:** Original observer(s): Collin Richter - Waypoint: ALCRPL059 - Treatment: U



Midwest Invasive Species  
Information Network



Source: MISIN. 2024. Midwest Invasive Species Information Network. Michigan State University - Applied Spatial Ecology and Technical Services Laboratory. This record is available online at <https://www.misin.msu.edu/report/misin/submit/summary/printRecord.php?obs=reprint&id=591232>