



## Presence Observation

### Curly pondweed

*Potamogeton crispus*



**Record ID:** 593367

**Observer:** William Keiper

**Source:** Michigan DEQ Water Resources Division

**Latitude:** 42.83825

**Longitude:** -83.72085

**Area:** Not Reported

**Density:** Sparse

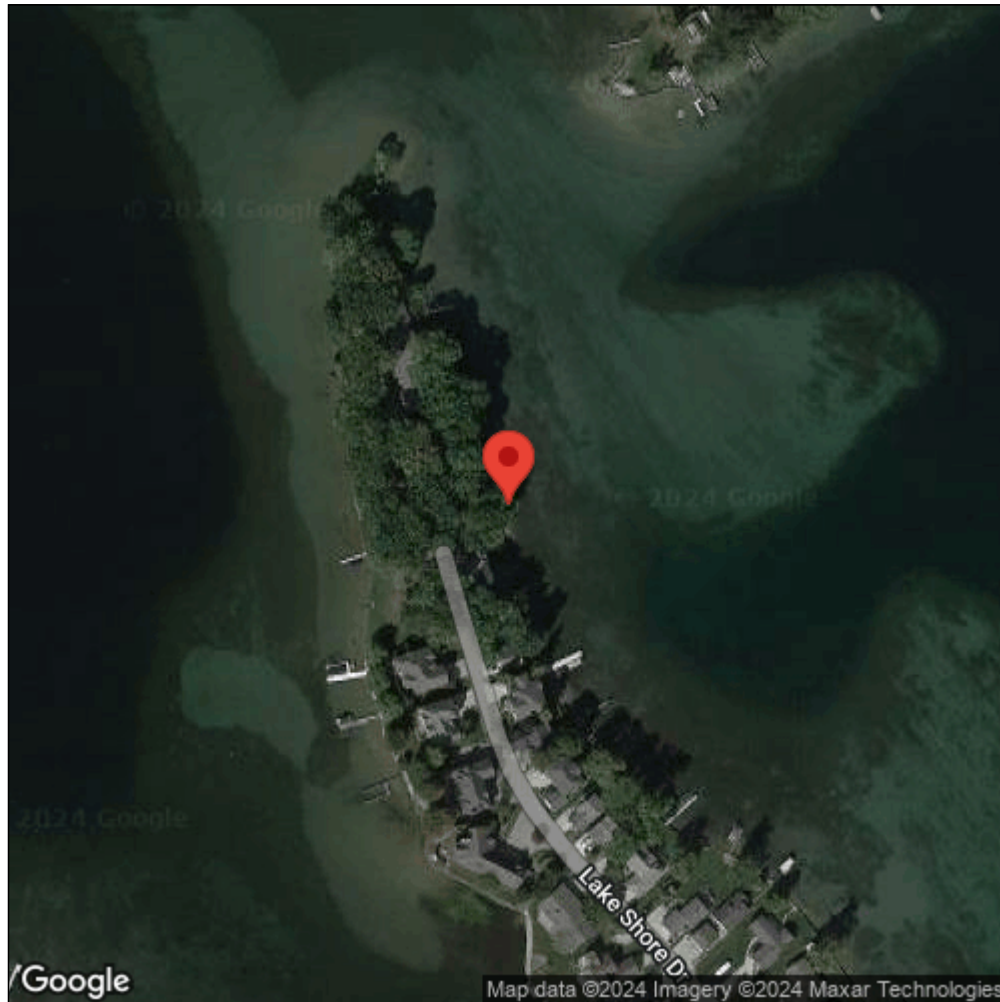
**Observation Date:** August 29, 2016

**Date Entered:** March 31, 2017

**Comments:** Lake: Fenton



Midwest Invasive Species  
Information Network



Source: MISIN. 2024. Midwest Invasive Species Information Network. Michigan State University - Applied Spatial Ecology and Technical Services Laboratory. This record is available online at <https://www.misin.msu.edu/report/misin/submit/summary/printRecord.php?obs=reprint&id=593367>