



## Presence Observation

### Zebra mussel

*Dreissena polymorpha*



**Record ID:** 593408

**Observer:** William Keiper

**Source:** Michigan DEQ Water Resources Division

**Latitude:** 41.90242

**Longitude:** -84.60696

**Area:** Not Reported

**Density:** Few (less than 5)

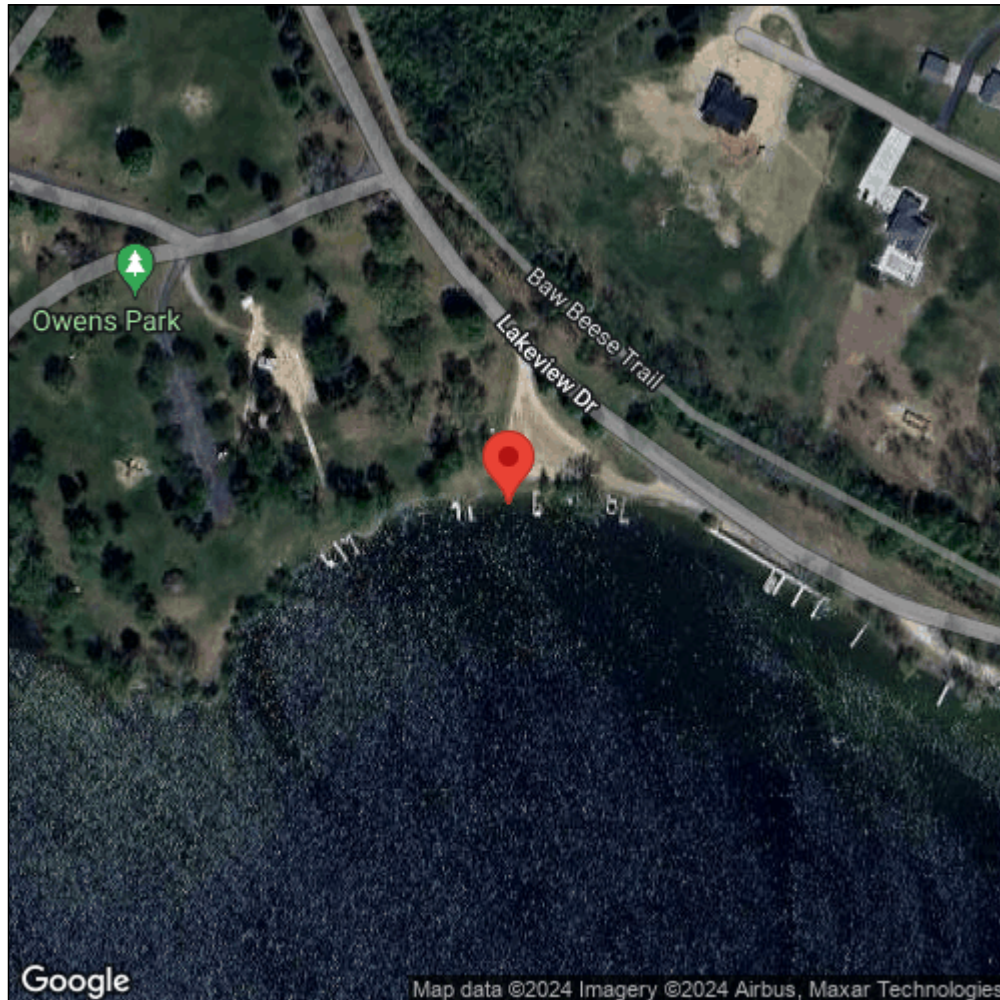
**Observation Date:** August 18, 2016

**Date Entered:** March 31, 2017

**Comments:** Lake: Baw Beese



Midwest Invasive Species  
Information Network



Source: MISIN. 2024. Midwest Invasive Species Information Network. Michigan State University - Applied Spatial Ecology and Technical Services Laboratory. This record is available online at <https://www.misin.msu.edu/report/misin/submit/summary/printRecord.php?obs=reprint&id=593408>