



Midwest Invasive Species
Information Network

Presence Observation

Curly pondweed

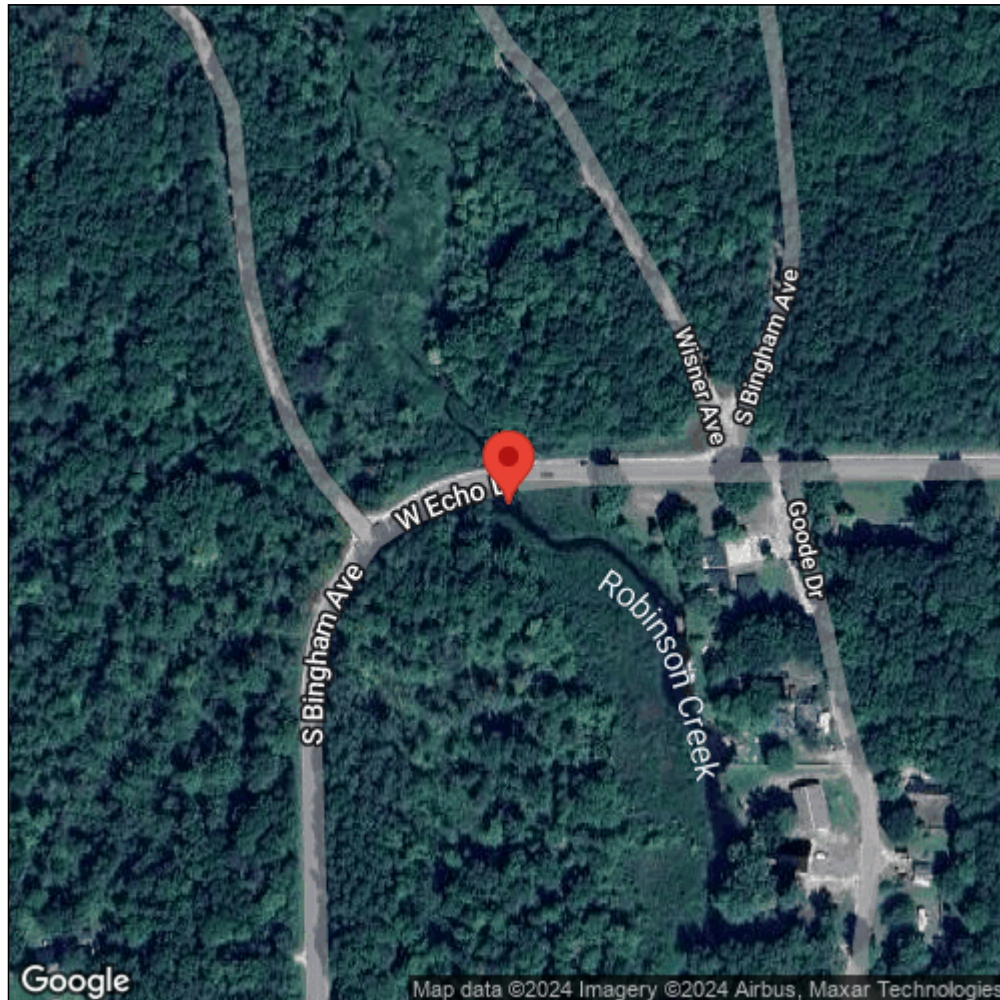
Potamogeton crispus



Record ID:	599574
Observer:	Emily Buffum
Source:	MISIN
Latitude:	43.53876004
Longitude:	-85.86012773
Area:	less than 1000 sq ft
Density:	Dense
Observation Date:	May 26, 2017
Date Entered:	May 27, 2017
Comments:	Curly Pondweed was no more dense than native aquatic plant species.



Midwest Invasive Species
Information Network



Source: MISIN. 2024. Midwest Invasive Species Information Network. Michigan State University - Applied Spatial Ecology and Technical Services Laboratory. This record is available online at <https://www.misin.msu.edu/report/misin/submit/summary/printRecord.php?obs=reprint&id=599574>