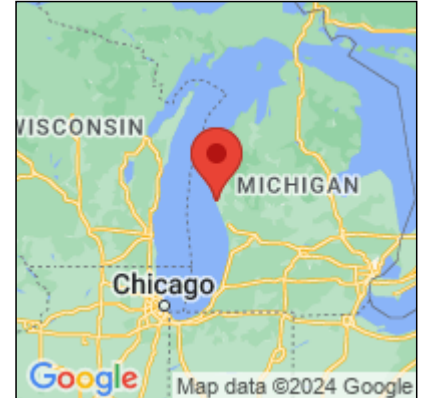




Presence Observation

Curly pondweed

Potamogeton crispus



Record ID: 600715

Observer: Emily Buffum

Source: MISIN

Latitude: 43.56233367

Longitude: -86.46884501

Area: less than 1000 sq ft

Density: Patchy

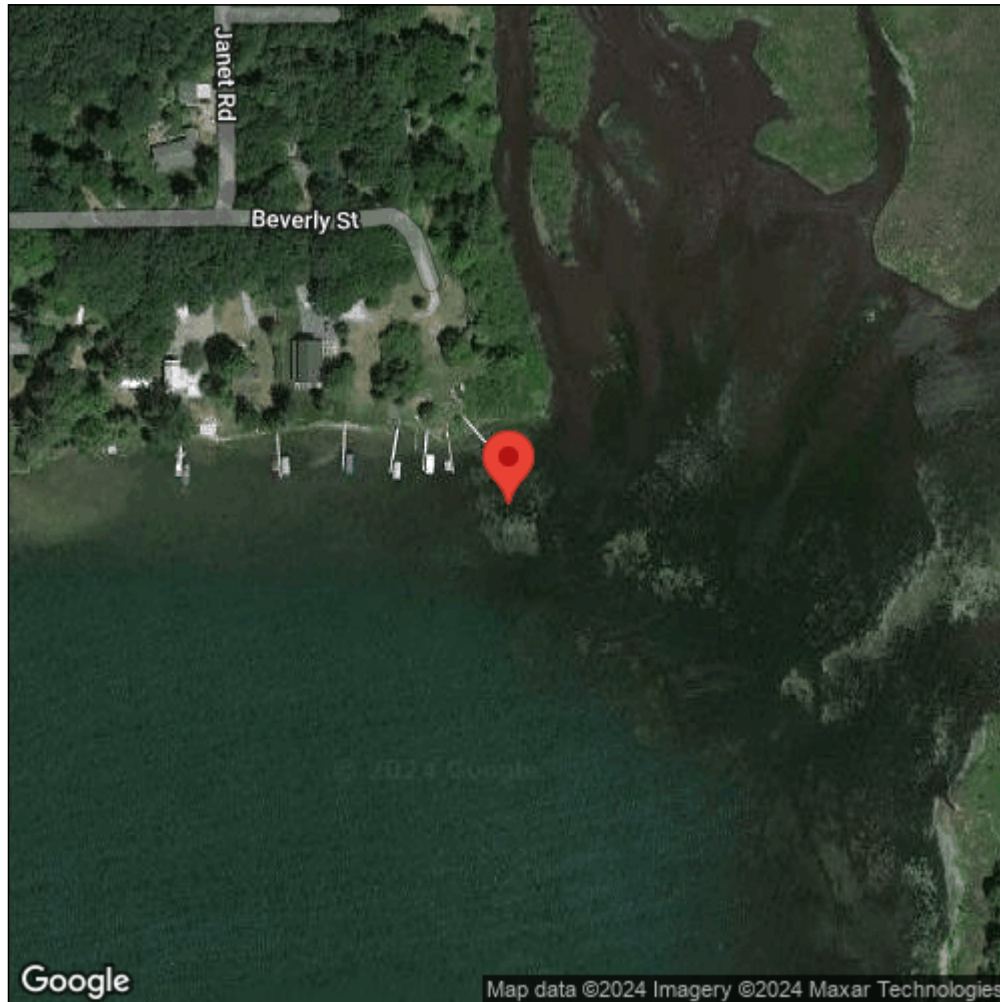
Observation Date: June 16, 2017

Date Entered: June 16, 2017

Comments: Curly Pond Weed was not dominant plant species.



Midwest Invasive Species
Information Network



Source: MISIN. 2024. Midwest Invasive Species Information Network. Michigan State University - Applied Spatial Ecology and Technical Services Laboratory. This record is available online at <https://www.misin.msu.edu/report/misin/submit/summary/printRecord.php?obs=reprint&id=600715>