



Midwest Invasive Species
Information Network

Presence Observation

Reed canarygrass

Phalaris arundinacea



Record ID: 601812

Observer: Josh Shields

Source: MISIN

Latitude: 43.81674618

Longitude: -86.05368733

Area: 1000 sq ft to 1/2 acre

Density: Patchy

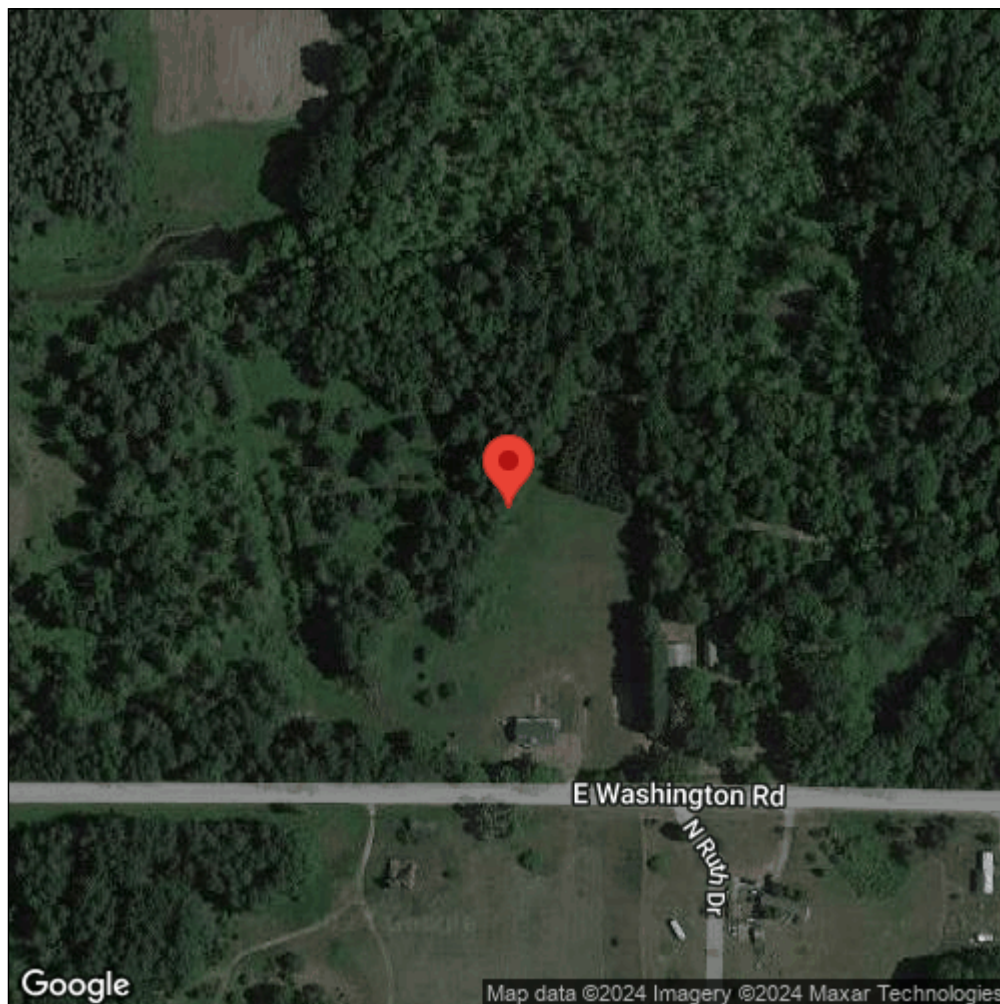
Observation Date: July 6, 2017

Date Entered: July 6, 2017

Comments:



Midwest Invasive Species
Information Network



Source: MISIN. 2024. Midwest Invasive Species Information Network. Michigan State University - Applied Spatial Ecology and Technical Services Laboratory. This record is available online at <https://www.misin.msu.edu/report/misin/submit/summary/printRecord.php?obs=reprint&id=601812>