



Midwest Invasive Species
Information Network

Presence Observation

Reed canarygrass

Phalaris arundinacea



Record ID: 605596

Observer: Shelby Bauer

Source: MISIN

Latitude: 45.2046967

Longitude: -84.4109785

Area: Individual/Few/Several

Density: Sparse

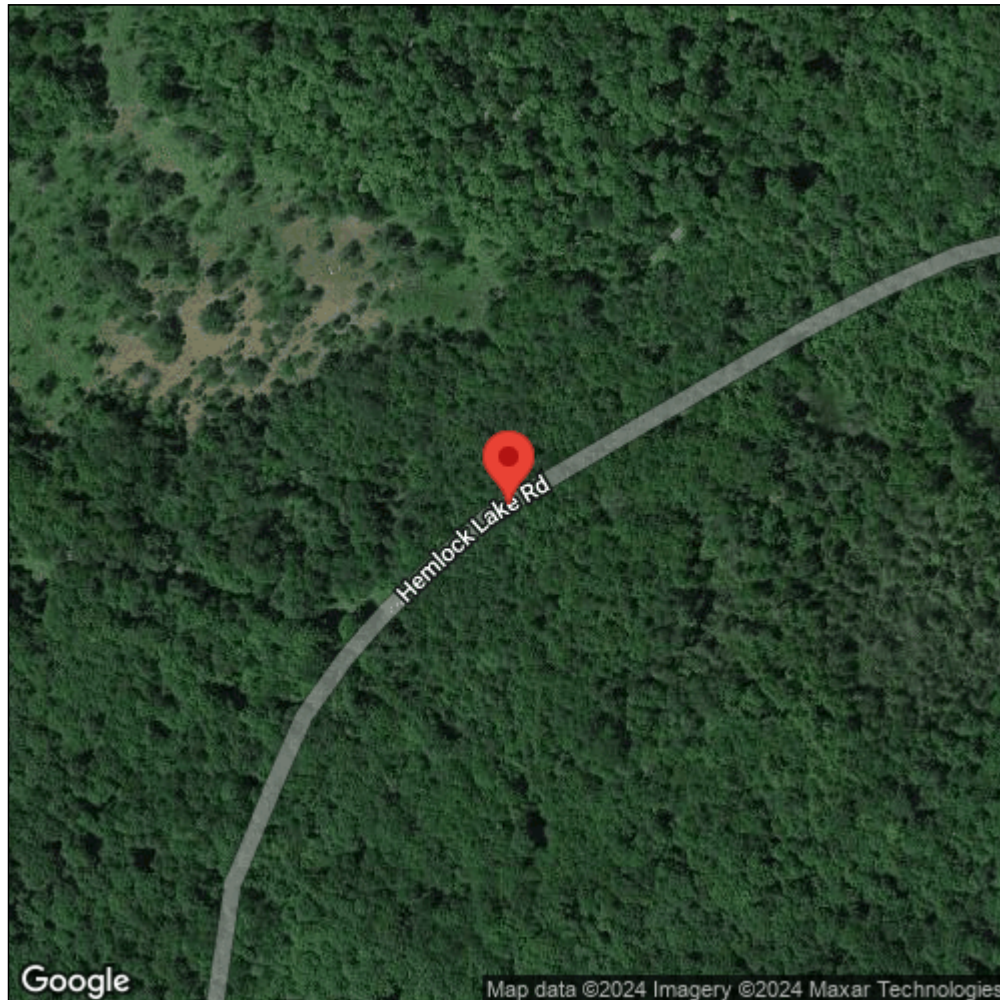
Observation Date: August 10, 2017

Date Entered: August 10, 2017

Comments:



Midwest Invasive Species
Information Network



Source: MISIN. 2024. Midwest Invasive Species Information Network. Michigan State University - Applied Spatial Ecology and Technical Services Laboratory. This record is available online at <https://www.misin.msu.edu/report/misin/submit/summary/printRecord.php?obs=reprint&id=605596>