



Midwest Invasive Species
Information Network

Presence Observation

Reed canarygrass

Phalaris arundinacea



Record ID: 607000

Observer: Eric Diesing

Source: Clinton River Watershed Council

Latitude: 42.60601

Longitude: -83.022167

Area: Individual/Few/Several

Density: Patchy

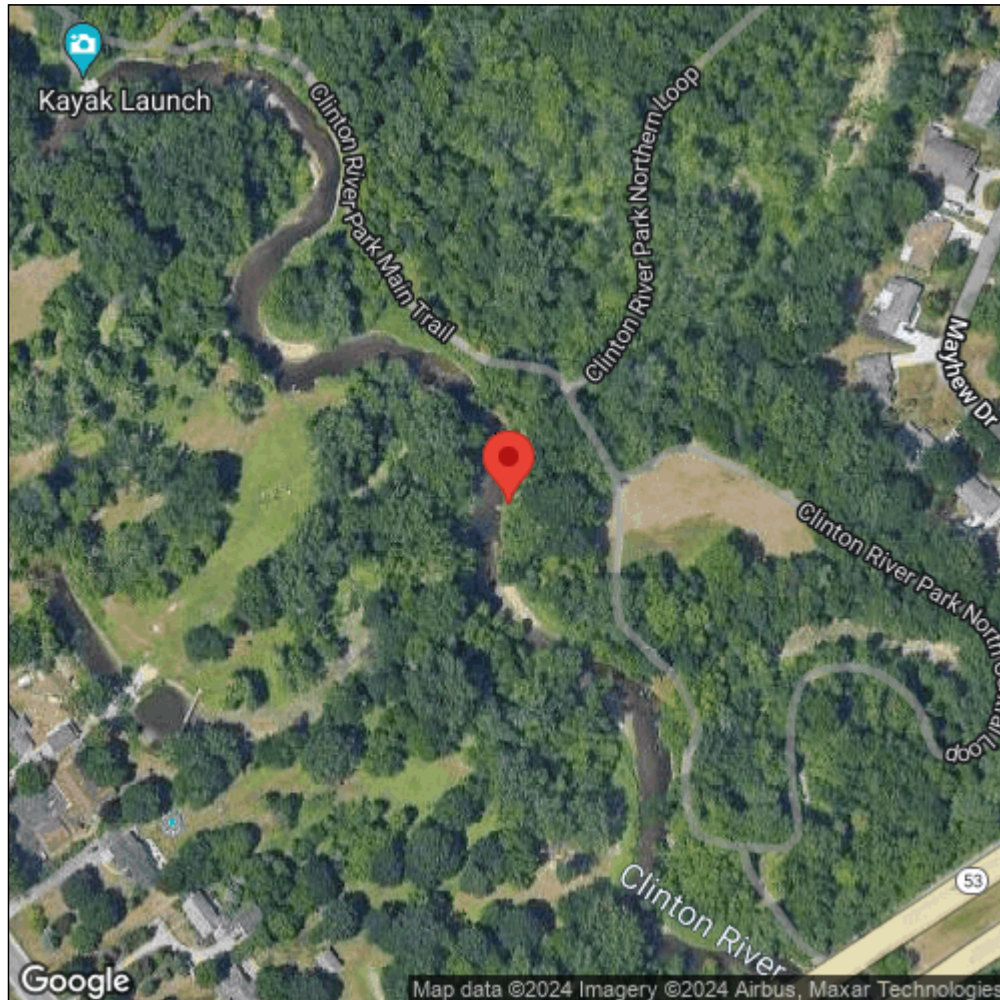
Observation Date: July 25, 2017

Date Entered: September 5, 2017

Comments:



Midwest Invasive Species
Information Network



Source: MISIN. 2024. Midwest Invasive Species Information Network. Michigan State University - Applied Spatial Ecology and Technical Services Laboratory. This record is available online at <https://www.misin.msu.edu/report/misin/submit/summary/printRecord.php?obs=reprint&id=607000>