



Midwest Invasive Species  
Information Network

## Presence Observation

### Reed canarygrass

*Phalaris arundinacea*



**Record ID:** 607014

**Observer:** Eric Diesing

**Source:** Clinton River Watershed Council

**Latitude:** 42.60378

**Longitude:** -83.019683

**Area:** Individual/Few/Several

**Density:** Patchy

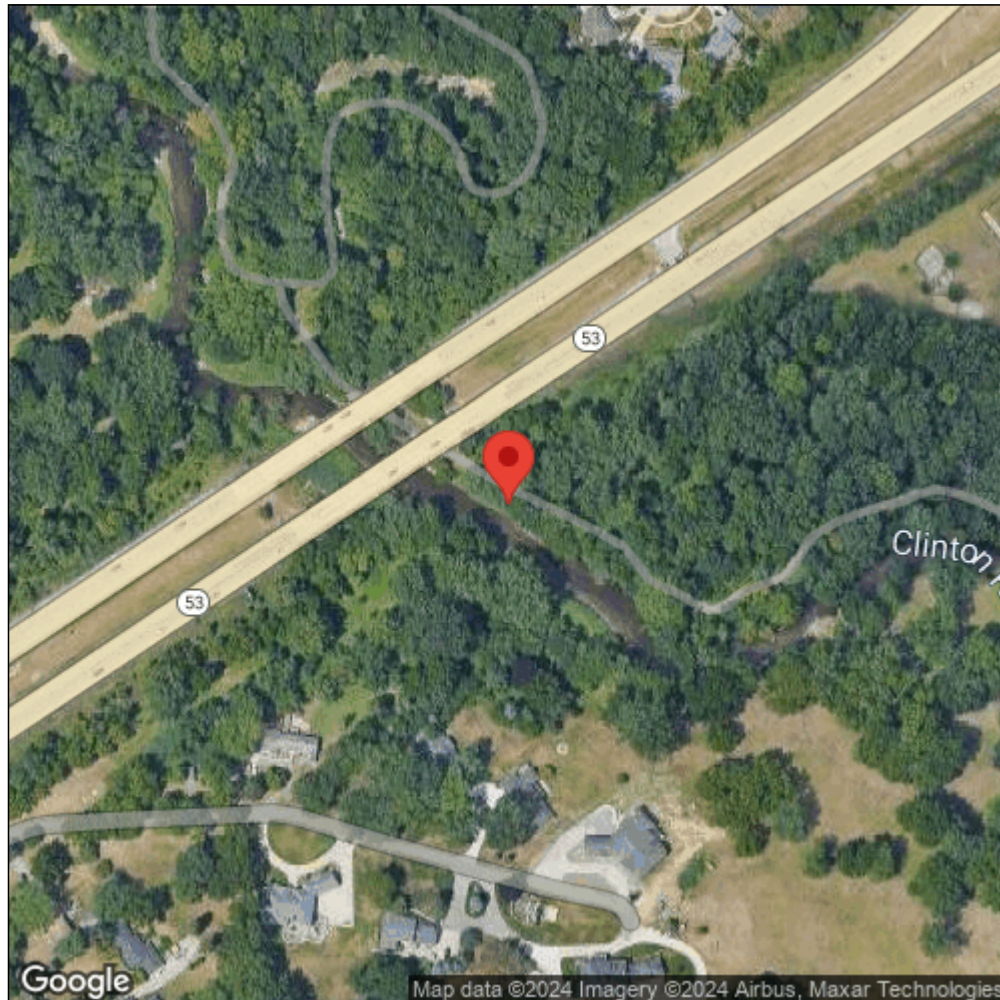
**Observation Date:** July 25, 2017

**Date Entered:** September 5, 2017

**Comments:**



Midwest Invasive Species  
Information Network



Source: MISIN. 2024. Midwest Invasive Species Information Network. Michigan State University - Applied Spatial Ecology and Technical Services Laboratory. This record is available online at <https://www.misin.msu.edu/report/misin/submit/summary/printRecord.php?obs=reprint&id=607014>