



## Presence Observation

### Purple loosestrife

*Lythrum salicaria*



**Record ID:** 611465

**Observer:** Anna Weis

**Source:** MISIN

**Latitude:** 43.75108882

**Longitude:** -85.35412666

**Area:** Individual/Few/Several

**Density:** Patchy

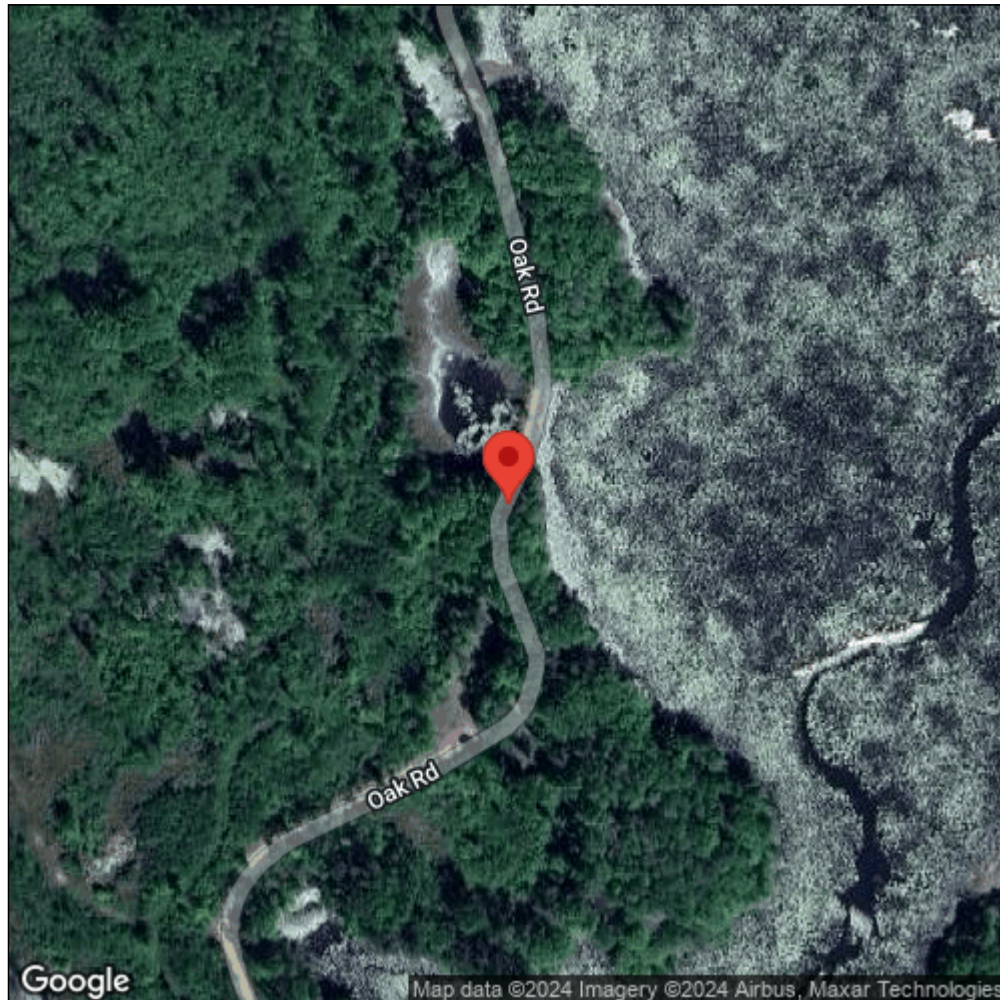
**Observation Date:** September 22, 2017

**Date Entered:** September 26, 2017

**Comments:** from Android; gps accuracy: 13meters Parks a.w.



Midwest Invasive Species  
Information Network



Source: MISIN. 2024. Midwest Invasive Species Information Network. Michigan State University - Applied Spatial Ecology and Technical Services Laboratory. This record is available online at <https://www.misin.msu.edu/report/misin/submit/summary/printRecord.php?obs=reprint&id=611465>