



## Presence Observation

### Reed canarygrass

*Phalaris arundinacea*



**Record ID:** 615353

**Observer:** John Frye

**Source:** Huron Pines

**Latitude:** 44.82921

**Longitude:** -83.57015

**Area:** less than 1000 sq ft

**Density:** Patchy

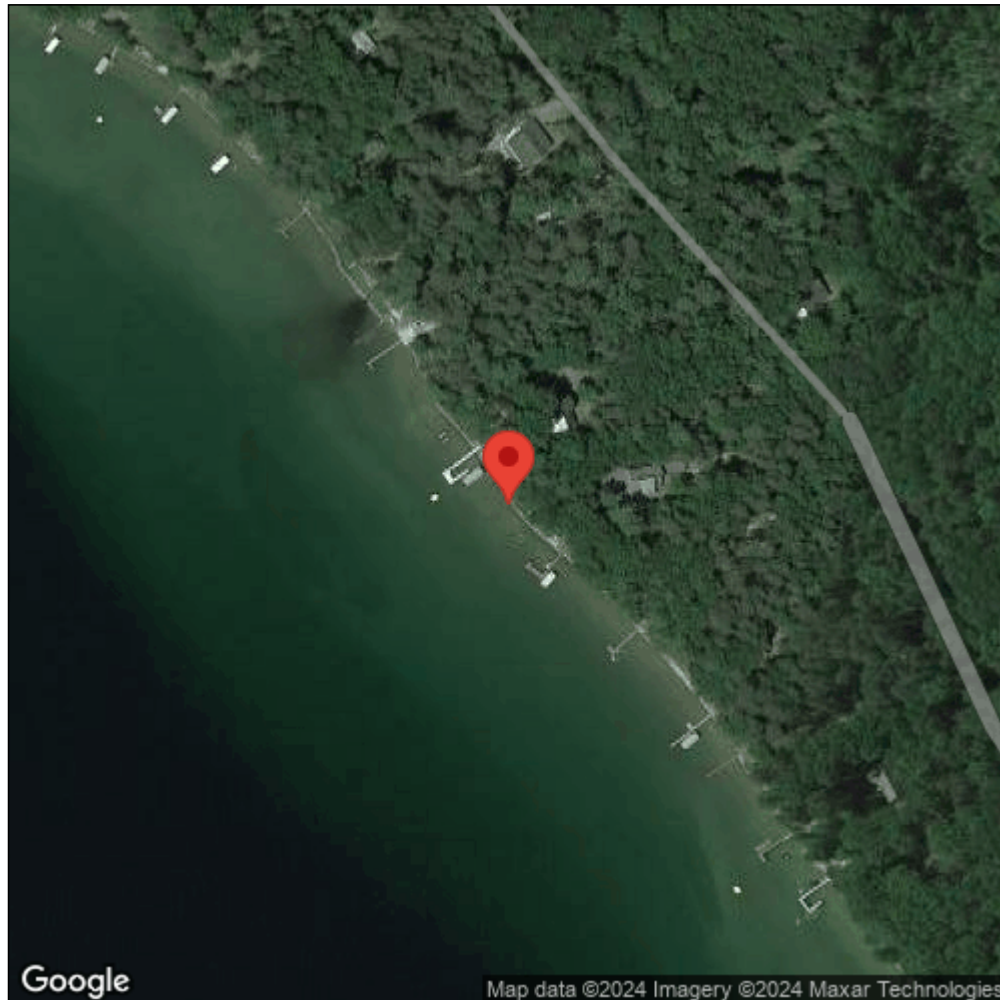
**Observation Date:** August 15, 2017

**Date Entered:** November 1, 2017

**Comments:** Site Name: HBRCG05 - Crownvetch mixed in - Hubbard Lake - Size of patch: 3x100 - Treatment: U



Midwest Invasive Species  
Information Network



Source: MISIN. 2024. Midwest Invasive Species Information Network. Michigan State University - Applied Spatial Ecology and Technical Services Laboratory. This record is available online at <https://www.misin.msu.edu/report/misin/submit/summary/printRecord.php?obs=reprint&id=615353>