



Presence Observation

Purple loosestrife

Lythrum salicaria



Record ID: 615433

Observer: Tara Buehler

Source: MISIN

Latitude: 45.32809314

Longitude: -84.38665688

Area: 1/2 acre to 1 acre

Density: Patchy

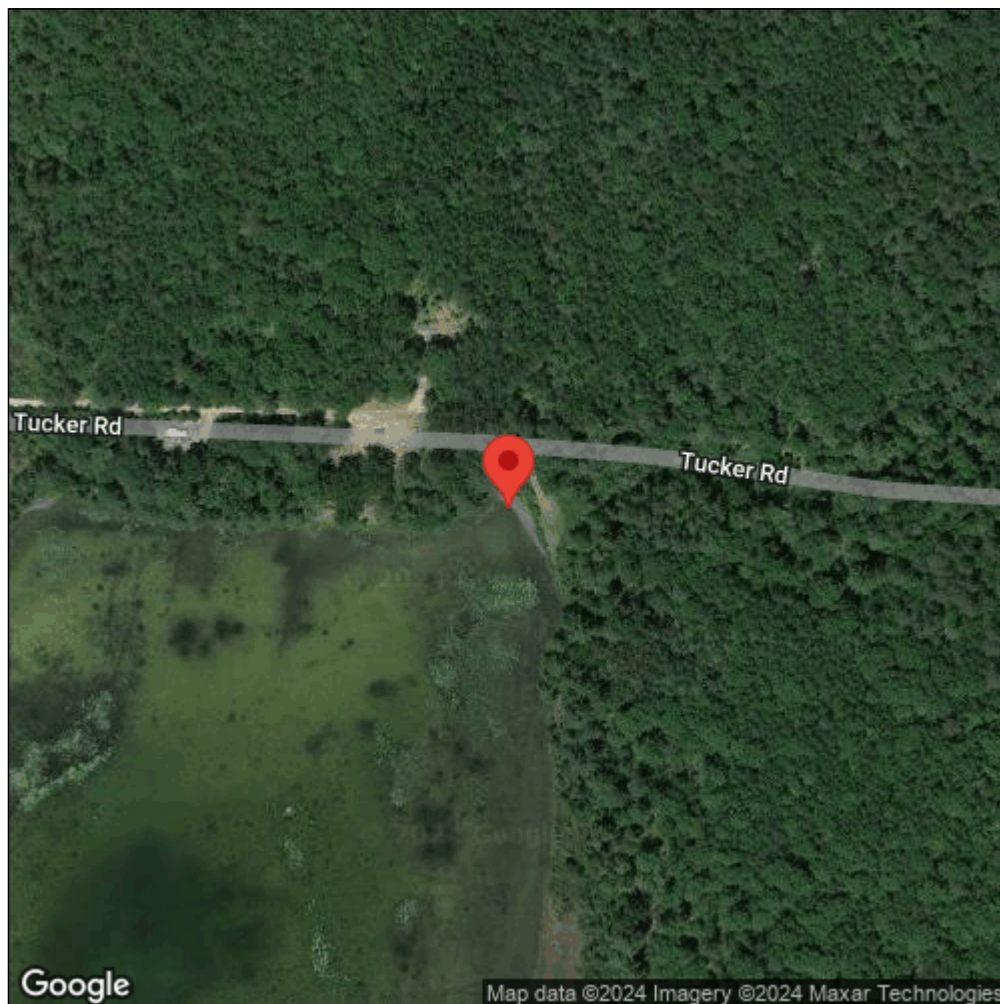
Observation Date: November 2, 2017

Date Entered: November 2, 2017

Comments: Main dispersed campground area to dike pretty dense. Pulled in 2017. Dike following stream northward for unknown length (at least to small bridge crossing and probably further)-plants small and usually not flowering but present. Pulled some in 2017.



Midwest Invasive Species
Information Network



Source: MISIN. 2024. Midwest Invasive Species Information Network. Michigan State University - Applied Spatial Ecology and Technical Services Laboratory. This record is available online at <https://www.misin.msu.edu/report/misin/submit/summary/printRecord.php?obs=reprint&id=615433>