



## Presence Observation

### Watercress

#### *Nasturtium officinale*



**Record ID:** 620029

**Observer:** Sarah Green

**Source:** Grand Traverse Conservation District

**Latitude:** 44.624951

**Longitude:** -85.532335

**Area:** 1000 sq ft to 1/2 acre

**Density:** Patchy

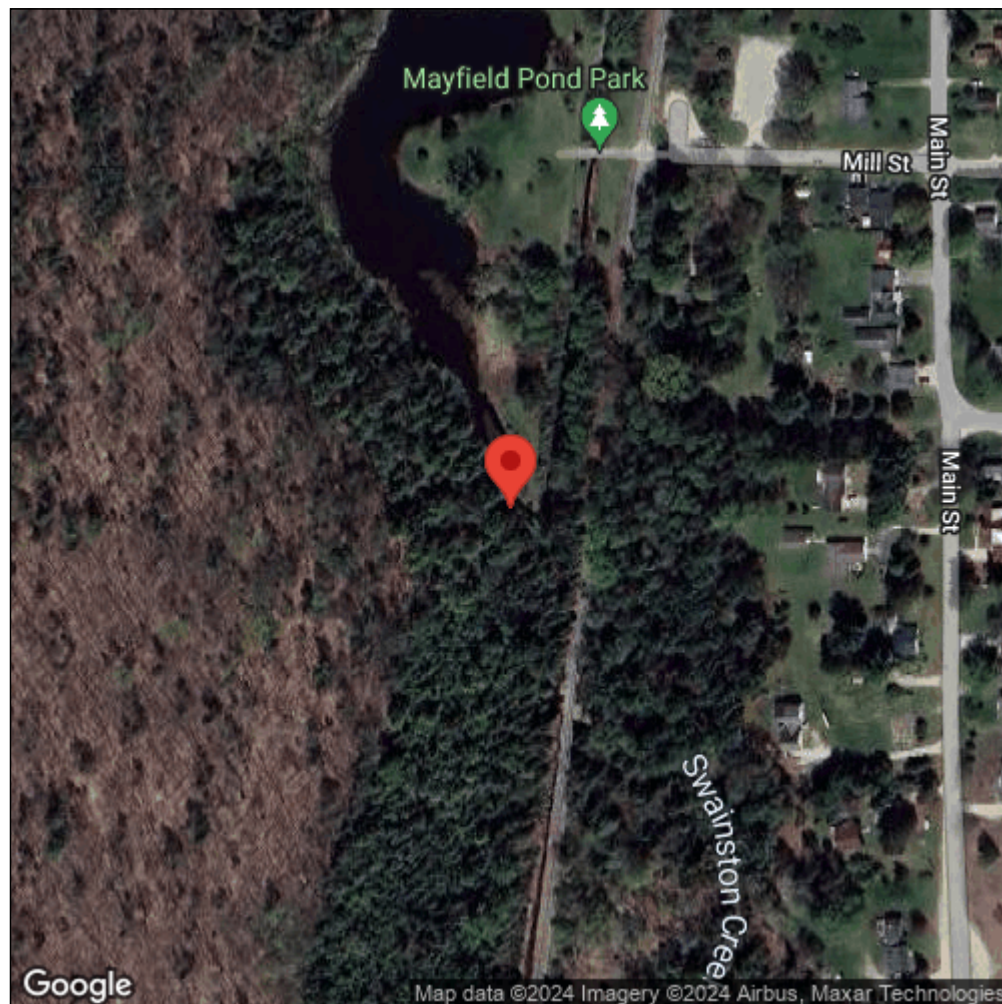
**Observation Date:** June 6, 2017

**Date Entered:** November 14, 2017

**Comments:** GTSGCR08332U - E bank of creek - Altitude: 251.14 - garmin Oregon 600 S - Treated: Untreated



Midwest Invasive Species  
Information Network



Source: MISIN. 2024. Midwest Invasive Species Information Network. Michigan State University - Applied Spatial Ecology and Technical Services Laboratory. This record is available online at <https://www.misin.msu.edu/report/misin/submit/summary/printRecord.php?obs=reprint&id=620029>