



Presence Observation

Watercress

Nasturtium officinale



Record ID: 621367

Observer: Sarah Green

Source: Grand Traverse Conservation District

Latitude: 44.373511

Longitude: -86.029969

Area: 1/2 acre to 1 acre

Density: Dense

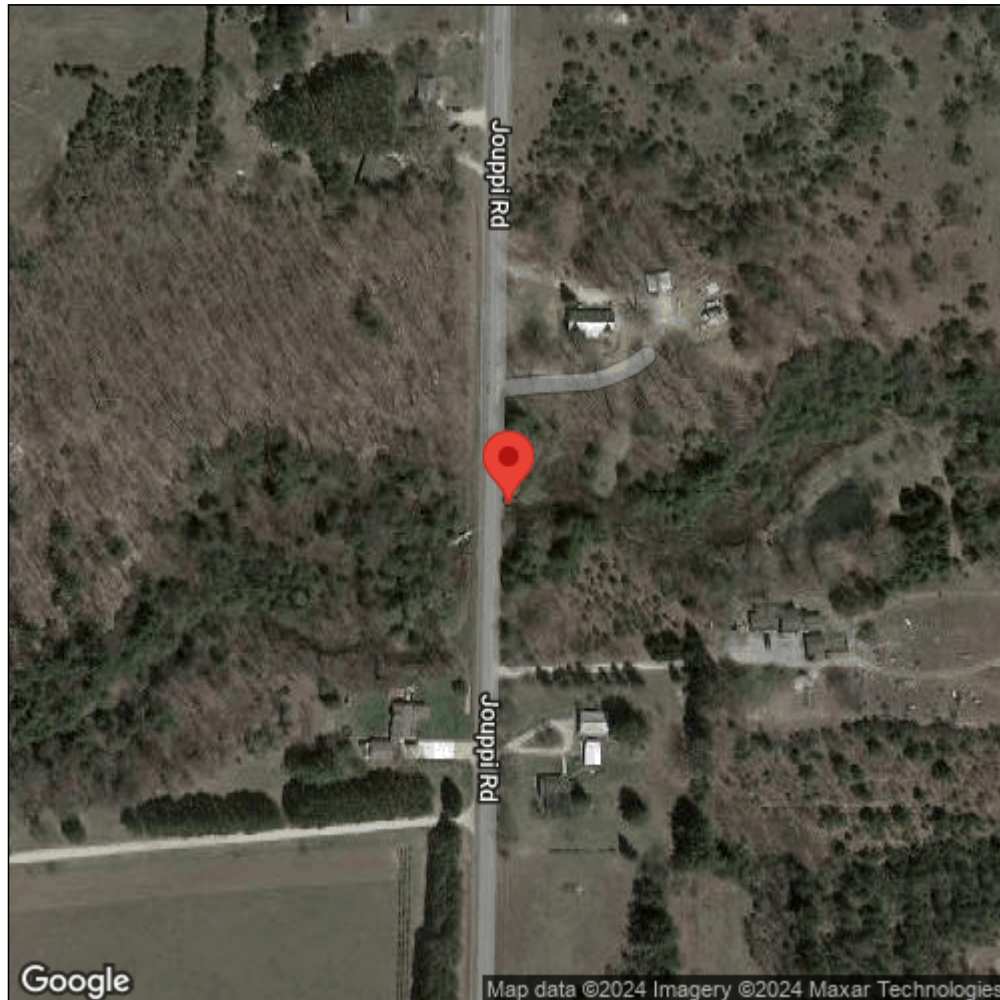
Observation Date: June 26, 2017

Date Entered: November 14, 2017

Comments: MCSGCR01243 - In creek - Altitude: 223.53 - garmin Oregon 600 S -
Treated: Untreated



Midwest Invasive Species
Information Network



Source: MISIN. 2024. Midwest Invasive Species Information Network. Michigan State University - Applied Spatial Ecology and Technical Services Laboratory. This record is available online at <https://www.misin.msu.edu/report/misin/submit/summary/printRecord.php?obs=reprint&id=621367>