



Midwest Invasive Species
Information Network

Presence Observation

Reed canarygrass

Phalaris arundinacea



Record ID: 622487

Observer: Sarah Green

Source: Grand Traverse Conservation District

Latitude: 44.575739

Longitude: -85.348529

Area: Individual/Few/Several

Density: Monoculture

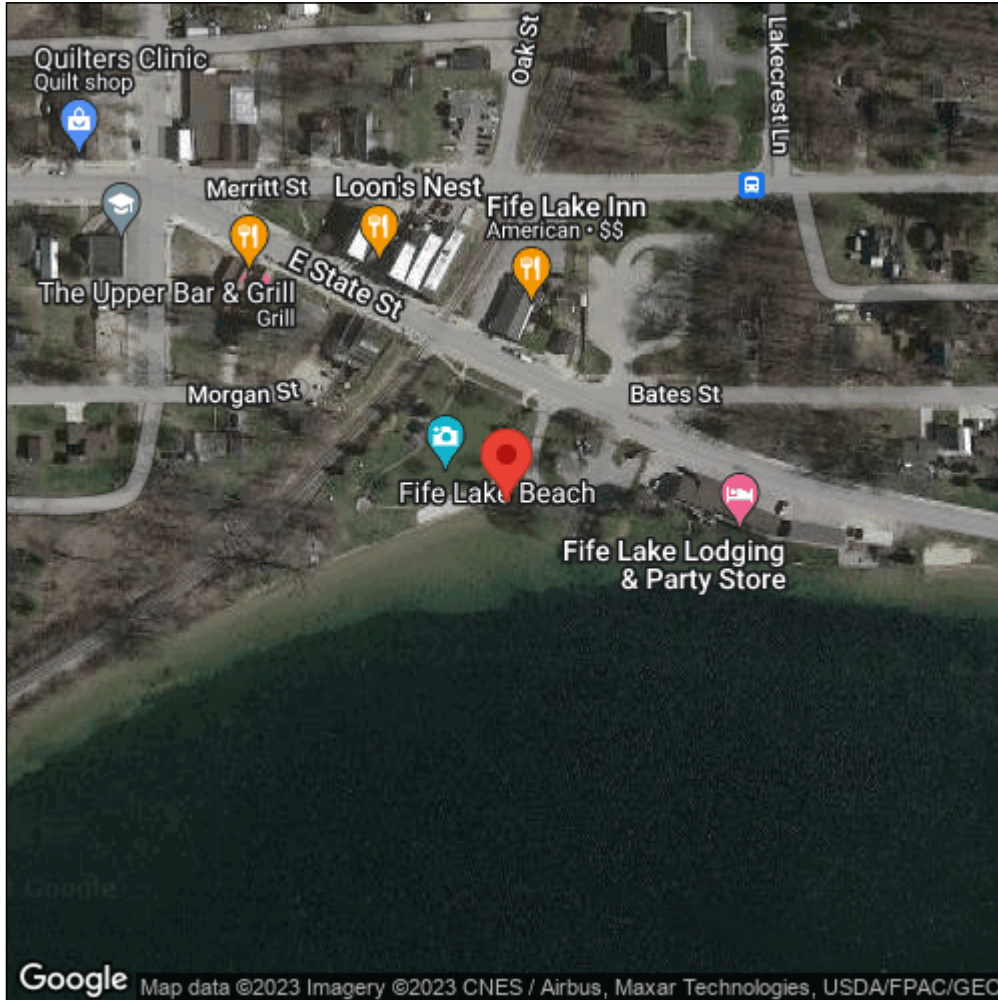
Observation Date: August 4, 2017

Date Entered: November 14, 2017

Comments: GTSGRC02114 - Altitude: 302.74 - garmin Oregon 600 S - Treated: Untreated



Midwest Invasive Species
Information Network



Source: MISIN. 2023. Midwest Invasive Species Information Network. Michigan State University - Applied Spatial Ecology and Technical Services Laboratory. This record is available online at <https://www.misin.msu.edu/report/misin/submit/summary/printRecord.php?obs=reprint&id=622487>