



## Presence Observation

### Curly pondweed

*Potamogeton crispus*



**Record ID:** 623450

**Observer:** Sarah Green

**Source:** Grand Traverse Conservation District

**Latitude:** 45.05325

**Longitude:** -85.590229

**Area:** greater than 1 acre

**Density:** Patchy

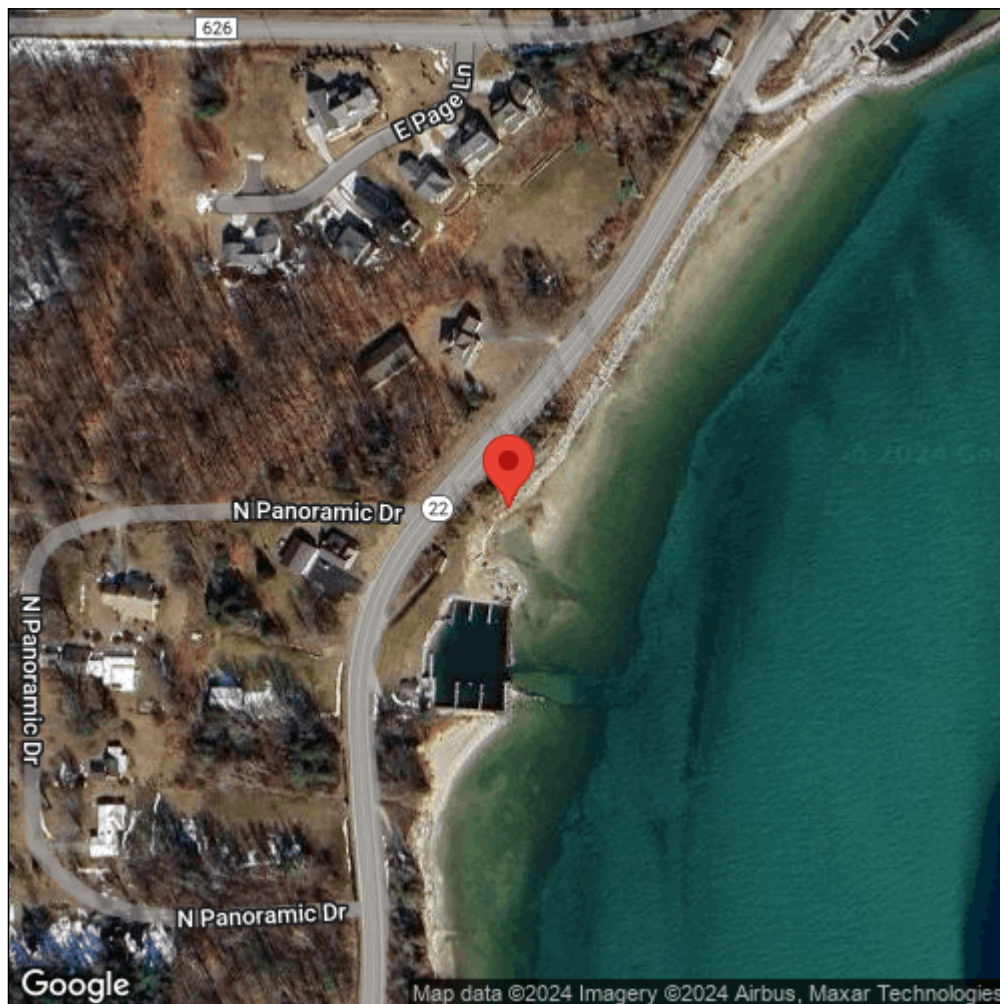
**Observation Date:** July 11, 2017

**Date Entered:** November 14, 2017

**Comments:** LCSGPW00952 - Altitude: 162.19 - garmin Oregon 600 S - Treated: Untreated



Midwest Invasive Species  
Information Network



Source: MISIN. 2024. Midwest Invasive Species Information Network. Michigan State University - Applied Spatial Ecology and Technical Services Laboratory. This record is available online at <https://www.misin.msu.edu/report/misin/submit/summary/printRecord.php?obs=reprint&id=623450>