



## Presence Observation

### Reed canarygrass

*Phalaris arundinacea*



**Record ID:** 633340

**Observer:** Jason Schnorr

**Source:** Upper Peninsula Phragmites Coalition

**Latitude:** 45.12414797

**Longitude:** -87.61191004

**Area:** 1000 sq ft to 1/2 acre

**Density:** Patchy

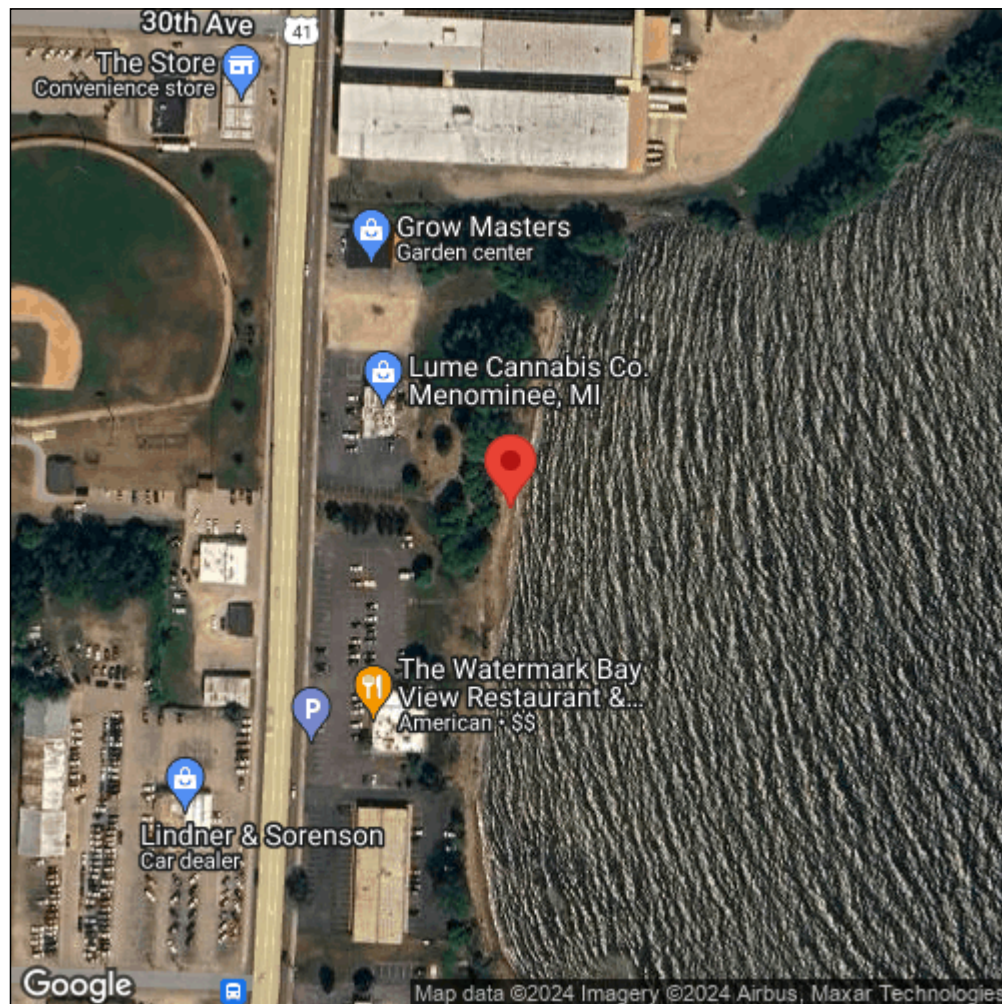
**Observation Date:** June 28, 2017

**Date Entered:** February 5, 2018

**Comments:** Waypoint: MNJSRC746 - Location ID: 746 - Est. Area: 0.250 -  
Treated: U



Midwest Invasive Species  
Information Network



Source: MISIN. 2024. Midwest Invasive Species Information Network. Michigan State University - Applied Spatial Ecology and Technical Services Laboratory. This record is available online at <https://www.misin.msu.edu/report/misin/submit/summary/printRecord.php?obs=reprint&id=633340>