



Midwest Invasive Species
Information Network

Presence Observation

Reed canarygrass

Phalaris arundinacea



Record ID: 635412

Observer: Ian Shackleford

Source: USDA Forest Service Ottawa National Forest

Latitude: 46.59664853

Longitude: -90.0810437

Area: 1/2 acre to 1 acre

Density: Sparse

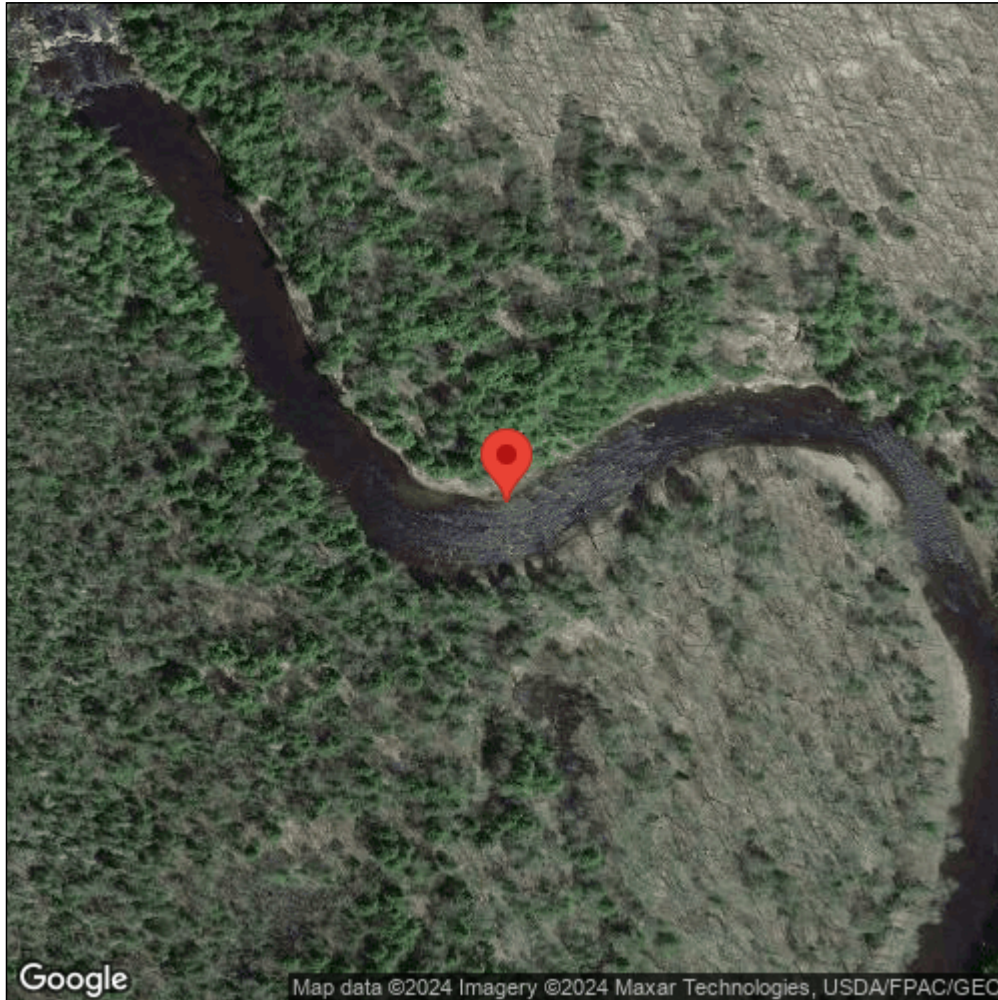
Observation Date: September 28, 2012

Date Entered: March 13, 2018

Comments: Original observer(s): Matthew Wojda - Black River. ONF# 4299.



Midwest Invasive Species
Information Network



Source: MISIN. 2024. Midwest Invasive Species Information Network. Michigan State University - Applied Spatial Ecology and Technical Services Laboratory. This record is available online at <https://www.misin.msu.edu/report/misin/submit/summary/printRecord.php?obs=reprint&id=635412>