



Presence Observation

Purple loosestrife

Lythrum salicaria



Record ID: 635741

Observer: Ian Shackleford

Source: USDA Forest Service Ottawa National Forest

Latitude: 46.57905

Longitude: -90.24265

Area: 1000 sq ft to 1/2 acre

Density: Sparse

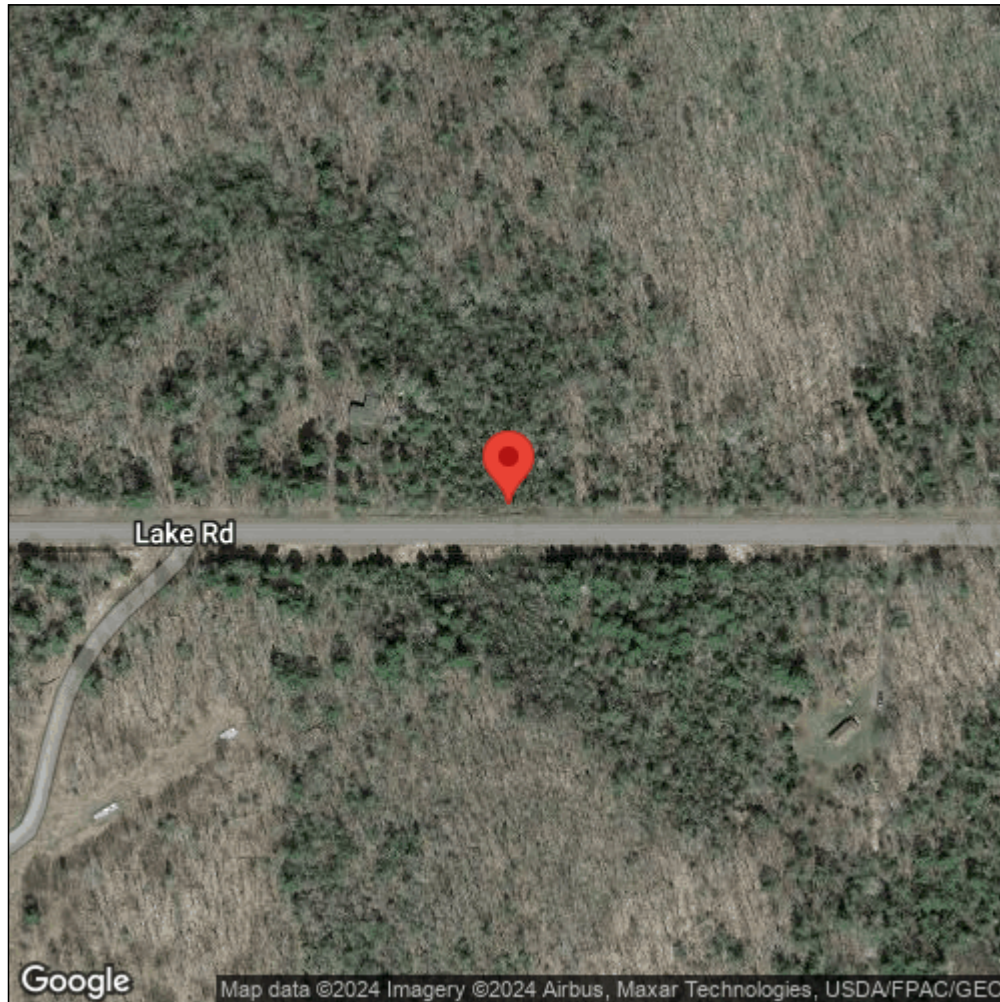
Observation Date: July 30, 2014

Date Entered: March 13, 2018

Comments: Original observer(s): Jim Finley - Lake Road (CR 505), north side. A few clumps. In rear of clump of cattails; hard to see. WP 243 @7/30/14. Maybe only one or two plants. Some of the spikes appear to have been attacked by insects. ONF# 4878.



Midwest Invasive Species
Information Network



Source: MISIN. 2024. Midwest Invasive Species Information Network. Michigan State University - Applied Spatial Ecology and Technical Services Laboratory. This record is available online at <https://www.misin.msu.edu/report/misin/submit/summary/printRecord.php?obs=reprint&id=635741>