



Midwest Invasive Species
Information Network

Presence Observation

Reed canarygrass

Phalaris arundinacea



Record ID: 635864

Observer: Ian Shackleford

Source: USDA Forest Service Ottawa National Forest

Latitude: 46.239386

Longitude: -89.365131

Area: 1000 sq ft to 1/2 acre

Density: Patchy

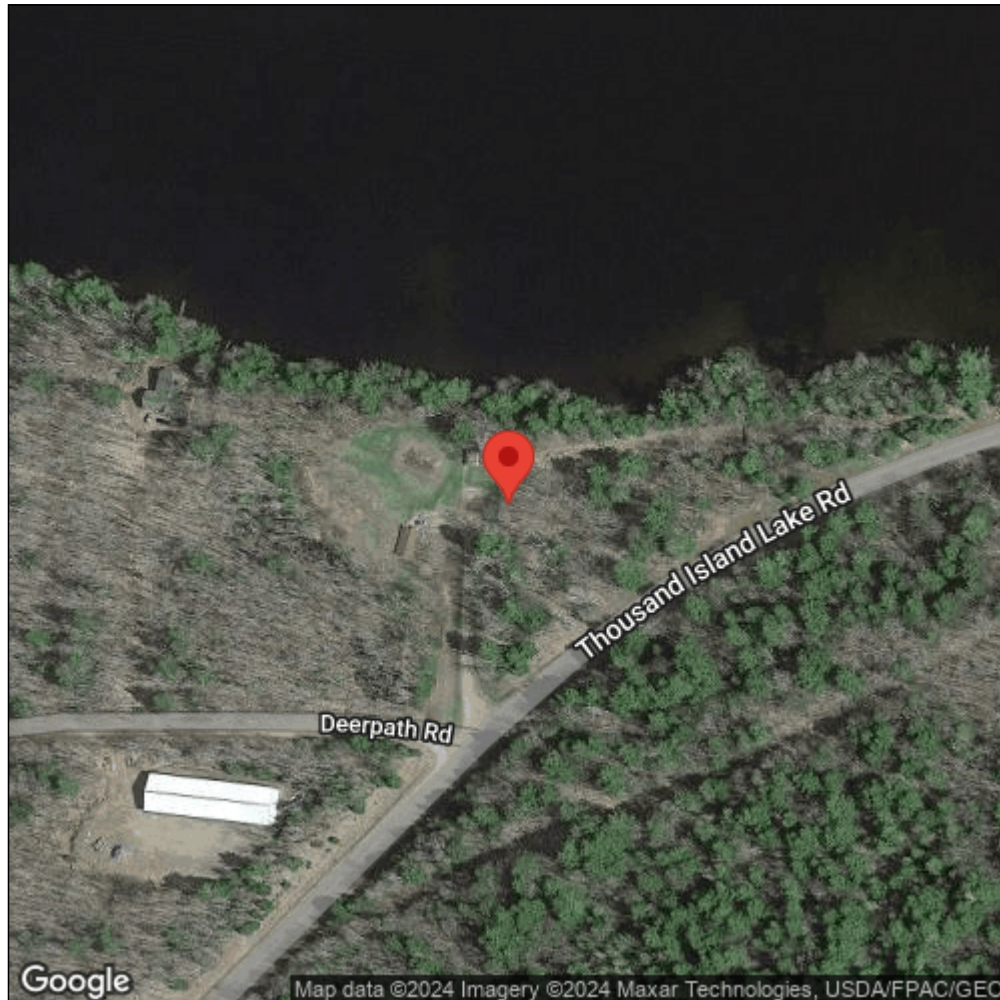
Observation Date: July 29, 2014

Date Entered: March 13, 2018

Comments: Original observer(s): W. Brinkmann - Long Lake. 1000 plants. S of shore, from Deer Path eastward. ONF# 4856.



Midwest Invasive Species
Information Network



Source: MISIN. 2024. Midwest Invasive Species Information Network. Michigan State University - Applied Spatial Ecology and Technical Services Laboratory. This record is available online at <https://www.misin.msu.edu/report/misin/submit/summary/printRecord.php?obs=reprint&id=635864>