



Midwest Invasive Species  
Information Network

## Presence Observation

### Reed canarygrass

*Phalaris arundinacea*



**Record ID:** 640483

**Observer:** Benjamin Bomlitz

**Source:** MISIN

**Latitude:** 41.5620904

**Longitude:** -83.90415274

**Area:** Not Reported

**Density:** Not Reported

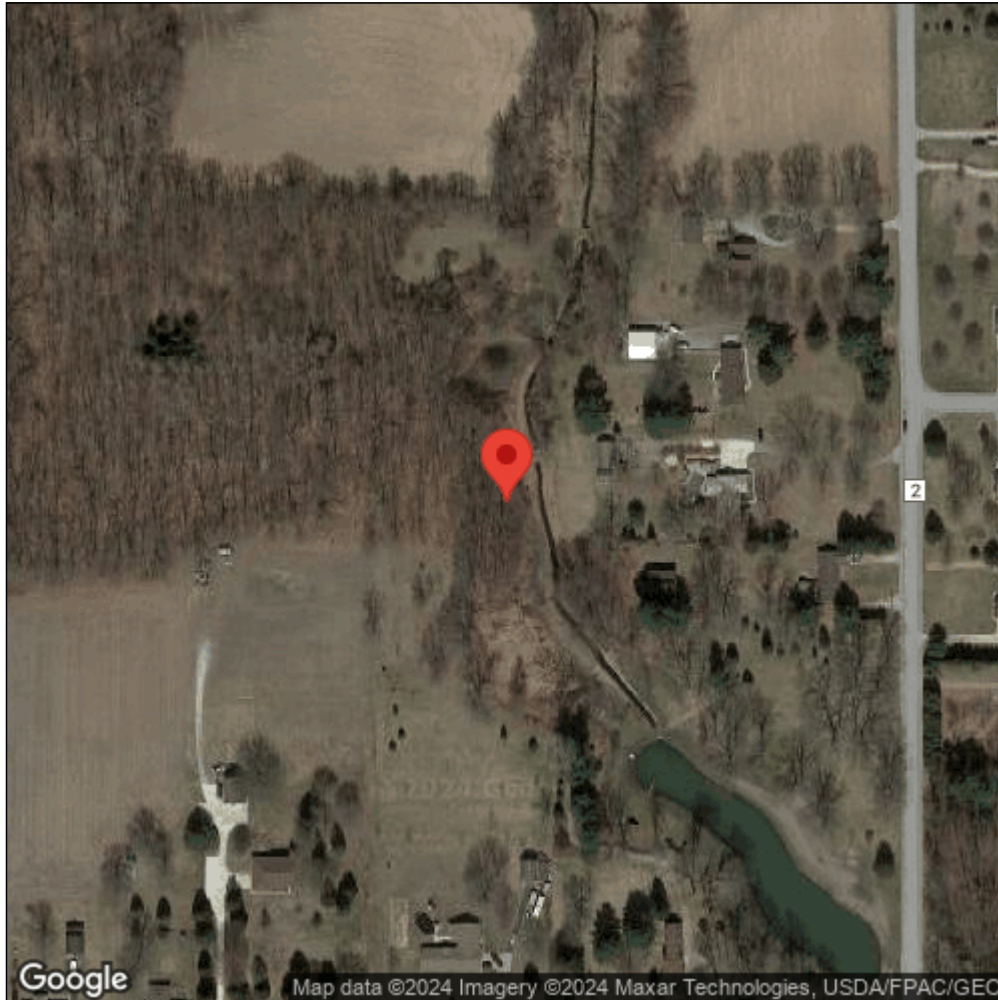
**Observation Date:** July 30, 2018

**Date Entered:** July 30, 2018

**Comments:** from Android; gps accuracy: 10meters



Midwest Invasive Species  
Information Network



Source: MISIN. 2024. Midwest Invasive Species Information Network. Michigan State University - Applied Spatial Ecology and Technical Services Laboratory. This record is available online at <https://www.misin.msu.edu/report/misin/submit/summary/printRecord.php?obs=reprint&id=640483>