



Presence Observation

Reed canarygrass

Phalaris arundinacea



Record ID: 643951

Observer: Josh Dumke

Source: Natural Resources Research Institute

Latitude: 46.896655

Longitude: -92.51397

Area: less than 1000 sq ft

Density: Patchy

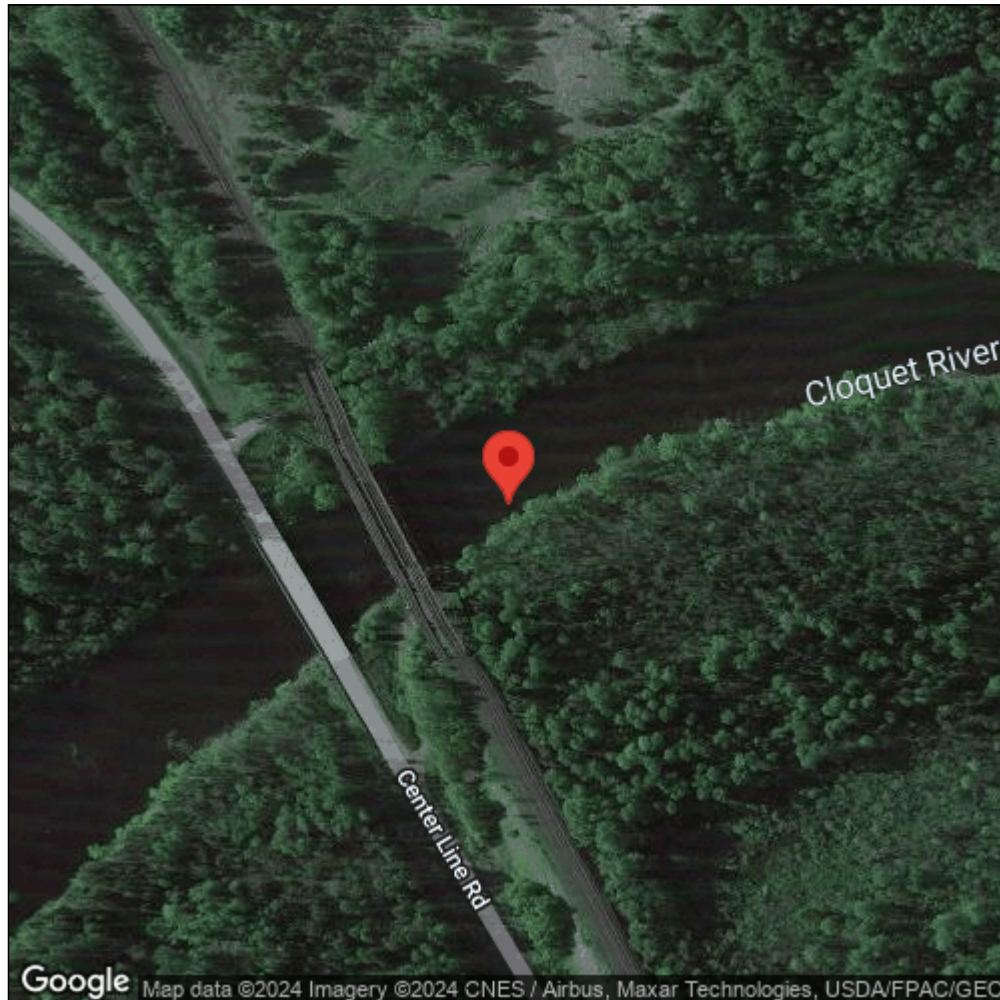
Observation Date: July 25, 2016

Date Entered: September 14, 2018

Comments: Original observer(s): K. Beaster, F. Wirtz - Pt: 90 - L. vulgare, P. pratense, L. corniculatus, C. arvense, C. vulgare present. CloqR2_090 - Cloquet River, Hwy 7 State W.A. Site - mixed forest - Class: C - Range: 51-100 - Est. patch: 24



Midwest Invasive Species
Information Network



Source: MISIN. 2024. Midwest Invasive Species Information Network. Michigan State University - Applied Spatial Ecology and Technical Services Laboratory. This record is available online at <https://www.misin.msu.edu/report/misin/submit/summary/printRecord.php?obs=reprint&id=643951>