



## Presence Observation

### Reed canarygrass

*Phalaris arundinacea*



**Record ID:** 643961

**Observer:** Josh Dumke

**Source:** Natural Resources Research Institute

**Latitude:** 48.17133171

**Longitude:** -92.49639657

**Area:** less than 1000 sq ft

**Density:** Dense

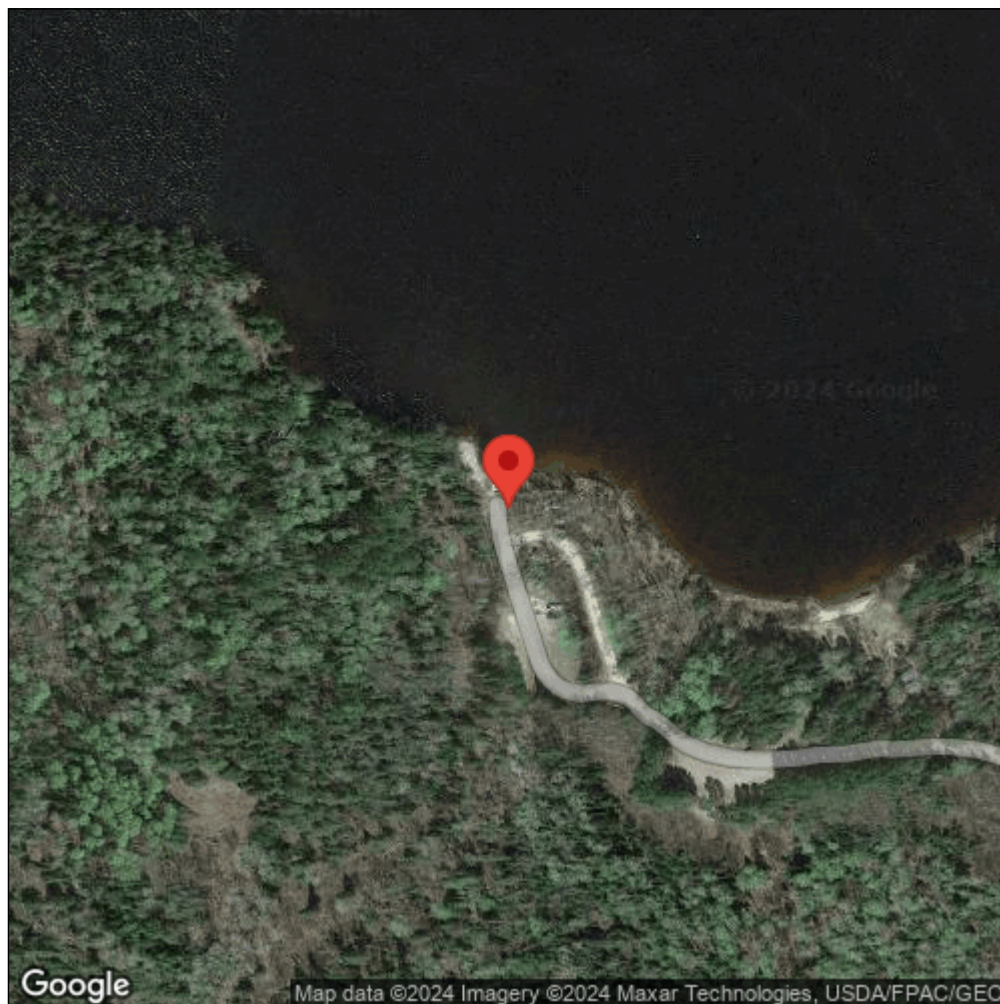
**Observation Date:** August 11, 2016

**Date Entered:** September 14, 2018

**Comments:** Original observer(s): Kelly Beaster, Farrah Wirtz - GPS Pnt: 165 - Start Point - EchoLk\_165 - Echo Lake State W.A. Site - wet meadow - Class: D - Range: 101-500 - Est. patch: 20 - Elev: 373.808807



Midwest Invasive Species  
Information Network



Source: MISIN. 2024. Midwest Invasive Species Information Network. Michigan State University - Applied Spatial Ecology and Technical Services Laboratory. This record is available online at <https://www.misin.msu.edu/report/misin/submit/summary/printRecord.php?obs=reprint&id=643961>